

# ALLENDALE

UNITED METHODIST CHURCH

MARCH 31, 2024

3803 Haines Road North  
St. Petersburg, FL 33703

(727) 527-6694

office@allendaleumc.org

www.allendaleumc.org

## WELCOME

**Allendale United Methodist Church** is a Reconciling Congregation. We affirm the sacred worth of all people and strive to practice Christ's example of unconditional love without exclusion. All are welcome to participate fully in the life and ministries of this congregation. Whatever your race, ethnicity, economic situation, sexual orientation, gender identity or expression, background or belief, age or condition of ableness, whether single or partnered, you are God's beloved and are welcome here. God calls us to acts of love, grace, and advocacy to promote healing and reconciliation. We are building a new Allendale: a place without barriers, a sanctuary for all.

**Office Hours:** *Mon-Wed 9-5, Thu 10-4*

We are honored that you chose to worship with us today! To learn more about the life of the church, if you have a special need, or you wish to visit with the pastor, please contact the office at (727) 527-6694 or office@allendaleumc.org.

**Gender Pronouns:** Asking and correctly using someone's preferred pronoun is one of the most basic ways to show your respect for their gender identity. When someone is referred to with the wrong pronoun, it can do harm.

**Childcare/Nursery:** Located in the courtyard, the first room to the right as you leave the sanctuary building. Children are welcomed and encouraged to stay in worship, even if they are noisy! The nursery is available beginning at 10 AM for children younger than kindergarten.

**Children's activity sheets** and fidget bags are available in the narthex.

**Changing table** is available in the Nursery.

**Unisex/family restrooms** are in the office hallway, accessible from the narthex, to the left as you exit the sanctuary.

**The balcony** is open for those wishing to have more social distancing.

**Holy Communion** is typically celebrated on the first Sunday of the month.

**Zoom** links for Allendale's virtual events can be found at [www.allendaleumc.org/online](http://www.allendaleumc.org/online).

**1924-2024** Celebrating 100 years of ministry!

## UPCOMING EVENTS

- Sun Apr 7 Drag Queen led Gospel Worship Service (Sanctuary) 10:30 AM
- Sun Apr 14 Black History Teach-In (Community Center) 9 AM
- Sun Apr 14 New Member Sunday (Sanctuary) 10:30 AM  
*Sign-up at [www.allendaleumc.org/join](http://www.allendaleumc.org/join)*
- Tue Apr 30 FAST Nehemiah Action (1900 Gandy Blvd N) 7 PM
- June 17-21 Inclusive Vacation Bible School - "Just Like Me"
- Sat Jun 22 Allendale Marching in St. Pete Pride Parade
- July 8-13 Youth at Warren Willis Camp for Summer Camp
- Sat Oct 12 Allendale 100th Anniversary Open House
- Sun Oct 13 Allendale 100th Anniversary Homecoming
- Get more information about our upcoming events by visiting: [www.allendaleumc.org/events](http://www.allendaleumc.org/events)*

## WORSHIP NOTES

### TODAY'S LITURGIST:

**PHILIP DINKINS** (he/him/his) and his husband Ed Lally joined Allendale in December, 2020. A native of Columbus, Indiana, Phil & Ed moved to Tampa in 1979 and to Saint Petersburg in 2015. Phil's parents were founding members in 1955 of Asbury United Methodist Church in Columbus, IN. A graduate of Indiana University, Phil spent his career as a commercial real estate broker handling office building leasing in downtown Tampa. He is retired from Cushman & Wakefield. Phil & Ed spend the summers in Camden, Maine and have a shelter tabby cat, Joey.

### TODAY'S MUSICIANS:

piano - Tru Mizzell  
guitar/vocals - Dylan Dames  
organist - Bill Lee

*Our Easter Choir is singing in Worship Today!  
Contact [tru@allendaleumc.org](mailto:tru@allendaleumc.org) to join our band or choir.*

## ANNOUNCEMENTS

### UNITED WOMEN IN FAITH MEETING:

Allendale United Women in Faith are meeting on Mon Apr 1 at 6:30 PM in the Hybrid Room. *All are welcome to attend.*

### DRAG GOSPEL WORSHIP:

Come back next Sun Apr 7 for Drag Gospel Worship with Momma Ashley Rose, Candy Von Sparkle, and more!

### 100TH ANNIVERSARY DRESS-UP:

On Sun Apr 14, we are inviting anyone who attends the service to wear a hat or piece of clothing that reflects their favorite decade or era, as part of our 100th Anniversary Celebration! We will have a handful of hats available to borrow.

### FOOD PANTRY DONATIONS:

Bring non-perishable items to Allendale for distribution to area food pantries, some of which are critically low. Collection bins are located in the Kitchen or Narthex. Some suggested items include cereal, peanut butter, powdered milk, cans with pull tabs. Sponsored by United Women in Faith.

# STEWARDSHIP

## PRAYERS

**Donna Baxla:** lung cancer treatments  
**Dan Leeper:** cancer treatments  
**Karen Welling:** health issues  
**Eunice Fisher:** health issues  
**Steven Geis:** brother Glenn's cancer treatments

## BIRTHDAYS:

Todd Miller	Apr 1
Tru Mizzell	Apr 1
Lorin Baxla	Apr 3
Lashley Marks	Apr 7
Lashley Marks	Apr 7
Jalen Garza	Apr 9
Diane Gibson	Apr 12
Stephanie Lindeman	Apr 14
Ellen Mowbray	Apr 15
Mia Devillasee	Apr 19
Patty Rust	Apr 24

*Birthday missing? Please contact the office*

## CARE AND SUPPORT:

Rev. David Franks, Minister of Pastoral Support  
Office hours Tue 11-2 | Thu 4-7  
make an appointment for care by calling the  
church office at 727-527-6694

## LICENSED THERAPISTS AND COUNSELORS:

available at Allendale's Counseling Center  
Visit [www.allendaleumc.org/counseling](http://www.allendaleumc.org/counseling)

## PRESENCE

Previous Sunday: 114 in-person, 1,022 online  
*Livestream:* [www.allendaleumc.org/online](http://www.allendaleumc.org/online)

## WANT TO JOIN ALLENDALE?

The next opportunity:  
**Sun Apr 14 at 10:30 AM**  
Sign-up at: [www.allendaleumc.org/join](http://www.allendaleumc.org/join)

## GIFTS

Give online: [www.allendaleumc.org/give](http://www.allendaleumc.org/give)  
Text-to-give: Text amount to 727-312-0808



Give Online now by scanning this  
code with your phone's camera

## WITNESS

### EASTER MORNING:

I cannot stay away on Easter Morning.  
Like Peter,  
I would run if I could.  
Stop the car,  
pump my arms,  
take the church steps two at a time,  
all to know—

Did it happen?  
Did it *really* happen?  
Is evil no match for love?

I'd slide down the center aisle.  
I'd grab the mic to ask  
the angels,  
the heavens,  
the children,

*Were the stories true?*

And in response,  
the choir would sing, "*Alleluia.*"  
The children would flower the cross.  
The preacher would tell me  
the stone was rolled away.  
The people would pass the peace,  
and welcome strangers,  
and make room in the pews.  
And with faith over doubt,

I would hope.

For I imagine that all of that  
ordinary holiness  
would be enough for Peter,  
and it would be enough for me.

*Poem by Rev. Sarah A. Speed | A Sanctified Art LLC*



# EASTER SUNDAY

**Wandering  
Heart**

**“And I Hope”**

Let us know you are here by going to [www.allendaleumc.org/here](http://www.allendaleumc.org/here) or by filling out the attendance pad in your row.

PRELUDE ..... Bill Lee

*Open the Gates of the Temple* |arr. Knapp|

WELCOME ..... Rev. Andy Oliver

Allendale United Methodist Church is a Reconciling Congregation. We affirm the sacred worth of all people and strive to practice Christ's example of unconditional love without exclusion. All are welcome to participate fully in the life and ministries of this congregation. Whatever your race, ethnicity, economic situation, sexual orientation, gender identity or expression, background or belief, age or condition of ableness, whether single or partnered, you are God's beloved and are welcome here. God calls us to acts of love, grace, and advocacy to promote healing and reconciliation. We are building a new Allendale: a place without barriers, a sanctuary for all.

SONG ..... Allendale Choir

*Christ the Lord is Risen Today, Joyful Joyful* |Wesley, Beethoven, Van Dyke|

CALL TO WORSHIP & AFFIRMATION OF FAITH ..... Philip Dinkins

SONG ..... Allendale Band

*Because He Lives* |Gaither|

PRAYER OF CONFESSION & WORDS OF FORGIVENESS ..... Rev. David Franks

TIME WITH CHILDREN ..... Theresa Frost

OFFERING ..... Congregation

*Up From The Grave Christ Arose* |Lowry|  
give online at [www.allendaleumc.org/give](http://www.allendaleumc.org/give)

PRAYER OF THE PEOPLE ..... Rev. David Franks

*Lord's Prayer* |Miller|

POEM ..... Reader

*Easter Morning* |Rev. Sarah Speed|

SONG ..... Allendale Choir

*The Spirit Makes All Things New* |Chopin|

PRAYER FOR ILLUMINATION & SCRIPTURE ..... Philip Dinkins

*Luke 24:1-12*

SERMON ..... Rev. Andy Oliver

SONG ..... Allendale Band

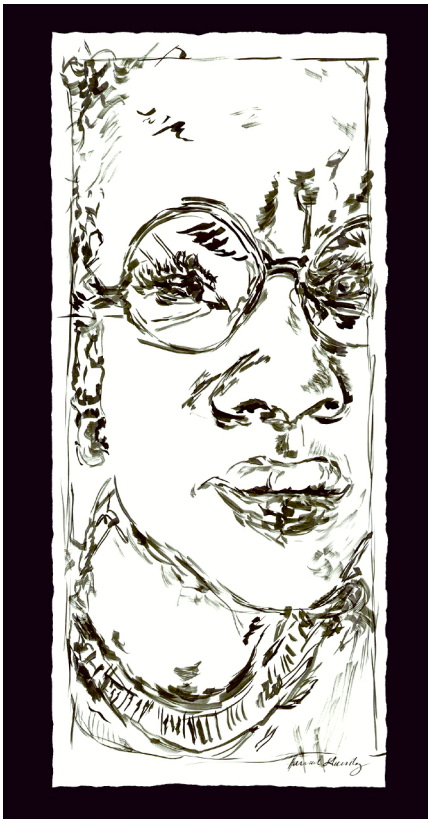
*In Christ Alone* |Getty, Townend|

CONNECTING WITH THE COMMUNITY ..... Theresa Frost

BENEDICTION ..... Philip Dinkins

POSTLUDE ..... Allendale Choir

*A Jubilant Song* |Albrecht|



*"Where?" by Hannah Garrity*

**LUKE 24:1-12**

Painted in ink on paper, Peter's expression here is inquisitive with a touch of concern. He's tired, but hopeful. He has just gotten amazing news. Joanna, Mary Magdalene, and Mary the mother of James relayed the message and Peter dared to believe it. The prophecy is coming true.

So many of the things that Jesus foretold have happened over the last few days.

The most heavy on Peter's heart are his repeated denials. Fear took over.

In contrast, now hope and joy begin to bubble up inside. He will see Jesus again!

Jesus has overcome death!

The prophecies have been fulfilled!

Truly, God is in this place.

*"WANDERING HEART"*

*Theme, Liturgy, and Images from The Sanctified Art*

Rev. Andy Oliver, Pastor | [andy@allendaleumc.org](mailto:andy@allendaleumc.org)

Rev. David Franks, Minister of Pastoral Support | [david@allendaleumc.org](mailto:david@allendaleumc.org)

Diana Ong, Church Administrator | [diana@allendaleumc.org](mailto:diana@allendaleumc.org)

Tru Mizzell, Director of Music Development | [tru@allendaleumc.org](mailto:tru@allendaleumc.org)

Theresa Frost, Director of Student Ministries | [theresa@allendaleumc.org](mailto:theresa@allendaleumc.org)

Cameron Helwege, Creative Director | [cameron@allendaleumc.org](mailto:cameron@allendaleumc.org)

Dylan Dames, Music and Organizing Associate | [dylan@allendaleumc.org](mailto:dylan@allendaleumc.org)

Aaron Bennett, Maintenance | [aaron@allendaleumc.org](mailto:aaron@allendaleumc.org)

Bill Lee | Organist

Maria Davidson | Nursery Coordinator

Madison Redington, Erin Giblin,

Courtney Ross | Nursery Attendants

Dr. Kate Pravera | Theologian in Residence

All of us in the Congregation | Ministers of the Gospel

## THIS WEEK

### Sun Mar 31

7 AM Easter Sunrise at Crescent Lake

10:30 AM Worship Service (Sanctuary)

5 PM Crystal Meth Anon (Tubman)

### Mon Apr 1

5:30 PM Community Qi Gong (CC)

6 PM Scripture Class (Zoom)

6:30 PM United Women in Faith (Hybrid)

6:30 PM AA Common Peril (Bill W.)

7 PM Suncoast Gay Square Dancing (CC)

8 PM AA Go After Sobriety (Tubman)

### Tue Apr 2

12:30 PM AA Just the Black Lines (Tubman)

### Wed Apr 3

5 PM Dinner at Allendale (Community Center)

6 PM Gentle Caregiving (CC)

8 PM AA Go After Sobriety (Tubman)

### Thu Apr 4

6:30 PM Suncoast Gay Square Dancing (CC)

7 PM AA Home Group (Bill W.)

### Fri Apr 5

7:30 PM AA Common Peril (Bill W.)

8 PM AA Go After Your Sobriety (Tubman)

### Sat Apr 6

9 AM Overeaters Anonymous (Wesley)

9:30 AM AA Women's Reflection (Bill W.)

### Sun Apr 7

9 AM Grief Support Group (Wesley)

10:30 AM Worship Service (Sanctuary)

5 PM Crystal Meth Anon (Tubman)

5:30 PM Youth Group (Wesley, Kitchen, Youth)

## DINNER MENU

### Wed Apr 3

Taco Bar, Eloté (street style corn),

Beans & Rice, Plantains, Flan

## ONGOING CLASSES

Grief Support Group - Sun 4/7 at 9 AM

*This class meets every other Sunday*

Scripture Class on Zoom - Mon at 6 PM

*Join via Zoom: [www.allendaleumc.org/online](http://www.allendaleumc.org/online)*

Wednesday Night Classes - Wed at 6 PM

*Dinner starts at 5 PM, followed by Classes*

*Gentle Caregiving Class resumes on Apr 3*