

ALLENDALE

UNITED METHODIST CHURCH

DECEMBER 17, 2023

3803 Haines Road North
St. Petersburg, FL 33703

(727) 527-6694

office@allendaleumc.org

www.allendaleumc.org

WELCOME

Allendale United Methodist Church is a Reconciling Congregation. We affirm the sacred worth of all people and strive to practice Christ's example of unconditional love without exclusion. All are welcome to participate fully in the life and ministries of this congregation. Whatever your race, ethnicity, economic situation, sexual orientation, gender identity or expression, background or belief, age or condition of ableness, whether single or partnered, you are God's beloved and are welcome here. God calls us to acts of love, grace, and advocacy to promote healing and reconciliation. We are building a new Allendale: a place without barriers, a sanctuary for all.

Office Hours: *Mon/Tue/Thu 9-5, Wed/Fri 9-12*

We are honored that you chose to worship with us today! To learn more about the life of the church, if you have a special need, or you wish to visit with the pastor, please contact the office at (727) 527-6694 or office@allendaleumc.org.

Gender Pronouns: Asking and correctly using someone's preferred pronoun is one of the most basic ways to show your respect for their gender identity. When someone is referred to with the wrong pronoun, it can do harm.

Childcare/Nursery: Located in the courtyard, the first room to the right as you leave the sanctuary building. Children are welcomed and encouraged to stay in worship, even if they are noisy! The nursery is available beginning at 10 AM for children younger than kindergarten.

Children's activity sheets and fidget bags are available in the narthex.

Changing table is available in the Nursery.

Unisex/family restrooms are in the office hallway, accessible from the narthex, to the left as you exit the sanctuary.

The balcony is open for those wishing to have more social distancing.

Holy Communion is typically celebrated on the first Sunday of the month.

Zoom links for Allendale's virtual events can be found at www.allendaleumc.org/online.

UPCOMING EVENTS

- Thu Dec 21 Longest Night Service (Sanctuary) 6 PM
- Sat Dec 23 Christmas Eve Eve Impromptu Christmas Pageant (Sanctuary) 6 PM
- Sun Dec 24 Christmas Eve Candlelight Service (Sanctuary) 6 PM
- Sun Dec 31 Drag Queen Gospel Worship (Sanctuary) 10:30 AM
- Sat Jan 6 Tai Chi Open House (Community Center) 10:30 AM
- Sun Jan 14 New Member Sunday (Sanctuary) 10:30 AM
Sign-up at www.allendaleumc.org/join
- Fri Jan 19 Gwendolyn Reese Book Event (Sanctuary) 6 PM
- Jan 26-28 SingFest 2024- a festival for those who identify as women (Allendale)
Learn more at www.singfestfl.com

Get more information about our upcoming events by visiting: www.allendaleumc.org/events

WORSHIP NOTES

TODAY'S LITURGIST:

JULIE JOHNSON (she/her/hers) is a licensed Texas attorney and Chartered Advisor in Philanthropy. Julie's 23 years of comprehensive experience includes roles such as Legal Counsel and Director of Wealth Management at a Texas community bank, and National Philanthropic Solutions Team Manager and National Interim Director of Philanthropic Services at Wells Fargo. Julie moved from North Carolina to St. Petersburg to help start Adelphi Trust Company, Florida's first and only Women-owned Trust Company. As an advocate for children's welfare, she served as a Guardian Ad Litem in North Carolina. She, along with her spouse, Johnny, are the proud parents of two LGBTQ adult children, Ashley and Aubrey, who reside in North Carolina, and Austin, age 4, who likes to dance during the children's sermon.

TODAY'S MUSICIANS:

guitar/vocals - Dylan Dames
piano - Tru Mizzell
vocals - Erica George
Contact tru@allendaleumc.org to join our band or choir.

WANT TO JOIN ALLENDALE?

The next opportunity:
Sun Jan 14 at 10:30 AM
Sign-up at: www.allendaleumc.org/join

ANNOUNCEMENTS

THE LONGEST NIGHT:

We will gather in the Sanctuary at 6 PM on Thu Dec 21 for a Worship Service on the Winter Solstice (the longest period of darkness all year), specifically creating space for grief, sadness, loss, and hope.

IMPROMPTU CHRISTMAS PAGEANT:

Bring your children dressed as any nativity character/animal or borrow a costume from us during the service to help us tell the nativity story. It will be chaotic, messy, inclusive, and beautiful, just like when Jesus was born.

CHRISTMAS EVE:

On Sun Dec 24 we will celebrate the fourth Sunday of Advent in worship at 10:30 AM. Then at 6 PM, we will have a Christmas Eve service in the Sanctuary with a candlelight procession out to the courtyard.

HOMELESS MEMORIAL SERVICE:

On Fri Dec 22 at 4 PM, join Celebrate Outreach, in cooperation with Homeless Leadership Alliance of Pinellas and other faith groups at the Unitarian Universalist Church (100 Mirror Lake Dr). This interfaith memorial service will remember those who died in Pinellas County while experiencing homelessness. The service is part of the observance of National Homeless Persons' Memorial Day.

STEWARDSHIP

PRAYERS

Donna Baxla: lung cancer treatments
Dan Leeper: cancer treatments
Karen Welling: health issues
Eunice Fisher: health issues
Joe Jacoby: cancer treatments

BIRTHDAYS:

Jim Light	Dec 17
Sandy Geis	Dec 19
Ruth Spangler	Dec 19
Miguel Iturralde	Dec 25
Brad Hunsinger	Dec 27
Courtney Ross	Dec 29
Jacqueline Reyes	Jan 1
Justin Miller	Jan 10
Lynn Fruit	Jan 12
Matt Blaine	Jan 14

Birthdays missing? Please contact the office

CARE AND SUPPORT:

Rev. David Franks, Minister of Pastoral Support
 Office hours Tue 11-2 | Thu 4-7
 make an appointment for care by calling the church office at 727-527-6694

LICENSED THERAPISTS AND COUNSELORS:

available at Allendale's Counseling Center
 Visit www.allendaleumc.org/counseling

PRESENCE

Previous Sunday: 122 in-person, 194 online
 Livestream: www.allendaleumc.org/online

GIFTS

Give online: www.allendaleumc.org/give
 Text-to-give: Text amount to 727-312-0808



Give Online now by scanning this code with your phone's camera

WITNESS

THE LONGEST NIGHT, A WORSHIP SERVICE FOR THE WEARY:

For those who have experienced loss, the joy of the holiday season can often feel elusive and out of reach. As a result, churches around the world have adopted the practice of having a "Blue Christmas" or a "Longest Night" service during the Advent season, typically on Dec 21. These services are designed to provide space for prayer, reflection, and remembrance amidst the twinkle lights and holiday hustle and bustle.

Friends, this service is for you. We will gather on Thu Dec 21 at 6 PM. Bring your grief. Bring your weariness. Bring your fatigue, and allow yourself a quiet space to reflect and draw near to God. We hope that this worship can be a gift, providing a space of calm, quiet, and healing. May you find peace in your journey.

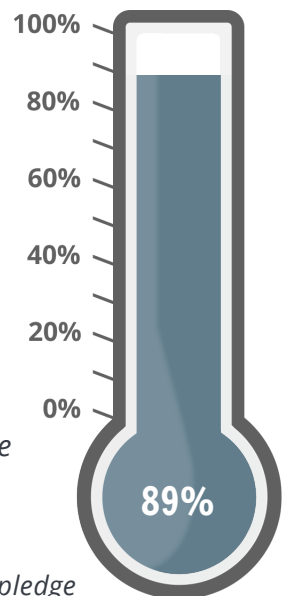


PLEDGE UPDATE

\$267,226 of our **\$300,000** goal

has been pledged as of Fri Dec 15.

63 pledges representing 96 people



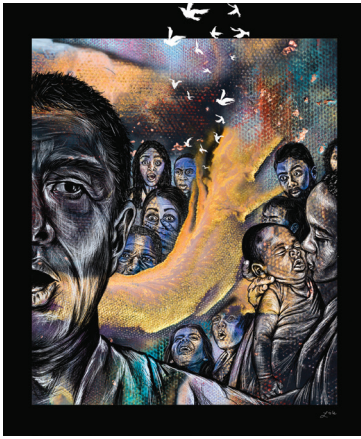
Make your pledge at www.allendaleumc.org/pledge

THIRD SUNDAY IN ADVENT

How does a weary world rejoice?
We allow ourselves to be amazed

Let us know you are here by going to www.allendaleumc.org/here or by filling out the attendance pad in your row.

PRELUDE	Music Video
<i>Sing It True</i> Speed, Olgun	
WELCOME	Rev. Andy Oliver
<i>Allendale United Methodist Church is a Reconciling Congregation. We affirm the sacred worth of all people and strive to practice Christ's example of unconditional love without exclusion. All are welcome to participate fully in the life and ministries of this congregation. Whatever your race, ethnicity, economic situation, sexual orientation, gender identity or expression, background or belief, age or condition of ableness, whether single or partnered, you are God's beloved and are welcome here. God calls us to acts of love, grace, and advocacy to promote healing and reconciliation. We are building a new Allendale: a place without barriers, a sanctuary for all.</i>	
SONG	Allendale Band
<i>Let It Rise</i> Murphy	
CALL TO WORSHIP & AFFIRMATION OF FAITH	Julie Johnson
LIGHTING THE ADVENT CANDLES	Congregation
<i>Candle of Joy</i> Gillette	
PRAYER OF CONFESSION & WORDS OF FORGIVENESS	Rev. David Franks
TIME WITH CHILDREN	Theresa Frost
OFFERING	Allendale Band
<i>Waiting For You</i> The Many <i>give online at www.allendaleumc.org/give</i>	
PRAYERS OF THE PEOPLE	Rev. David Franks
<i>Lord's Prayer</i> Miller	
POEM	Campbell Horn
<i>All the Way to Joy</i> by Rev. Sarah Speed sanctifiedart.org	
SONG	Allendale Band
<i>Isn't It Amazing</i> Strickland, Barnes	
PRAYER FOR ILLUMINATION & SCRIPTURE	Julie Johnson
<i>Psalm 126 & Luke 1:57-66</i>	
SERMON	Rev. Andy Oliver
SONG	Allendale Band
<i>Feeling Good</i> Simone	
CONNECTING WITH THE COMMUNITY	Theresa Frost
BENEDICTION	Julie Johnson
POSTLUDE	Allendale Band
<i>Waiting For You</i> The Many	



"What Wonder Turns Into" by Rev. Lisle Gwynn Garrity

LUKE 1:57-66

Zechariah's voice pours out of him, parting the surrounding crowd like the Red Sea, stirring each person into confusion and bewilderment.



"Watercourses" by Hannah Garrity

PSALM 126

Holy Wisdom, we allow ourselves to be amazed, to dream, to lean into your call to garner your gifts the way raindrops become creeks and creeks become coursing rivers. We must flow on in endless song. Sing with us.

"HOW DOES A WEARY WORLD REJOICE"

Theme, Liturgy, and Images from The Sanctified Art

Rev. Andy Oliver, Pastor | andy@allendaleumc.org

Rev. David Franks, Minister of Pastoral Support | david@allendaleumc.org

Clarissa Silveira, Church Administrator | clarissa@allendaleumc.org

Tru Mizzell, Director of Music Development | tru@allendaleumc.org

Theresa Frost, Director of Student Ministries | theresa@allendaleumc.org

Cameron Helwege, Creative Director | cameron@allendaleumc.org

Dylan Dames, Music and Organizing Associate | dylan@allendaleumc.org

Aaron Bennett, Maintenance | aaron@allendaleumc.org

Bill Lee | Organist

Maria Davidson | Nursery Coordinator

Madison Redington, Erin Giblin,

Courtney Ross | Nursery Attendants

Dr. Kate Pravera | Theologian in Residence

All of us in the Congregation | Ministers of the Gospel

THIS WEEK

Sun Dec 17

9 AM Book Study Group (CC)

9 AM Grief Support Group (Wesley)

10:30 AM Worship Service (Sanctuary)

5 PM Crystal Meth Anon (Tubman)

5:30 PM Youth Christmas Party (Parsonage)

Mon Dec 18

5 PM Community Qi Gong (Community Center)

6 PM Scripture Class (Zoom)

6:30 PM AA Common Peril (Bill W.)

8 PM AA Go After Sobriety (Rustin & Tubman)

Tue Dec 19

12:30 PM AA Just the Black Lines (Tubman)

Wed Dec 20

8 PM AA Go After Sobriety (Rustin)

Thu Dec 21

9 AM Chit Chat (Zoom)

6 PM Longest Night Service (Sanctuary)

7 PM AA Home Group (Bill W.)

Fri Dec 22

7:30 PM AA Common Peril (Bill W.)

8 PM AA Go After Your Sobriety (Rustin)

Sat Dec 23

9:30 AM AA Women's Reflection (Bill W.)

6 PM Impromptu Christmas Pageant (Sanct.)

Sun Dec 24

10:30 AM Worship Service (Sanctuary)

5 PM Crystal Meth Anon (Tubman)

6 PM Candlelight Christmas Eve (Sanctuary)

ONGOING CLASSES

Book Study Group - Sun at 9 AM
Last week of "Poverty, By America"

Grief Support Group - Sun 12/31 at 9 AM
This class meets every other Sunday

Scripture Class on Zoom - Mon at 6 PM
Join via Zoom: www.allendaleumc.org/online

Wednesday Night Classes - Wed at 6 PM
Returning on January 10, 2024