

ALLENDALE

UNITED METHODIST CHURCH

DECEMBER 3, 2023

3803 Haines Road North
St. Petersburg, FL 33703

(727) 527-6694
office@allendaleumc.org

www.allendaleumc.org

WELCOME

Allendale United Methodist Church is a Reconciling Congregation. We affirm the sacred worth of all people and strive to practice Christ's example of unconditional love without exclusion. All are welcome to participate fully in the life and ministries of this congregation. Whatever your race, ethnicity, economic situation, sexual orientation, gender identity or expression, background or belief, age or condition of ableness, whether single or partnered, you are God's beloved and are welcome here. God calls us to acts of love, grace, and advocacy to promote healing and reconciliation. We are building a new Allendale: a place without barriers, a sanctuary for all.

Office Hours: *Mon/Tue/Thu 9-5, Wed/Fri 9-12*

We are honored that you chose to worship with us today! To learn more about the life of the church, if you have a special need, or you wish to visit with the pastor, please contact the office at 727.527.6694 or office@allendaleumc.org.

Gender Pronouns: Asking and correctly using someone's correct pronoun is one of the most basic ways to show your respect for their gender identity. When someone is referred to with the wrong pronoun, it can do harm.

Childcare/Nursery: Located in the courtyard, the first room to the right as you leave the sanctuary building. Children are welcomed and encouraged to stay in worship, even if they are noisy! The nursery is available beginning at 10 AM for children younger than kindergarten.

Children's activity sheets and fidget bags are available in the narthex.

Changing table is available in the Nursery.

Unisex/family restrooms are accessible from the narthex, to the left as you exit the sanctuary.

The balcony is open for those wishing to have more social distancing.

Holy Communion is typically celebrated on the first Sunday of the month.

Zoom links for Allendale's virtual events can be found at www.allendaleumc.org/online.

UPCOMING EVENTS

- Mon Dec 4 United Women in Faith Lunch at Stone Soup (4122 16th St N) - 1 PM
- Fri Dec 8 Celebrate Outreach Christmas Caroling (100 Mirror Lake Dr N) - 7 PM
- Fri Dec 8 Gay Men's Chorus of Tampa Bay Christmas Concert (Sanctuary) 8 PM
- Sun Dec 10 New Member Sunday (Sanctuary) 10:30 AM
Sign-up at www.allendaleumc.org/join
- Sat Dec 16 Brunch With Santa (Community Center) 10 AM
- Thu Dec 21 Longest Night Service (Sanctuary) 6 PM
- Sat Dec 23 Christmas Eve Eve Impromptu Christmas Pageant (Sanctuary) 6 PM
- Sun Dec 24 Christmas Eve Candlelight Service (Sanctuary) 6 PM
- Sun Dec 31 Drag Queen Gospel Worship (Sanctuary) 10:30 AM

Get more information about our upcoming events by visiting: www.allendaleumc.org/events

WORSHIP NOTES

HIV TESTING BEFORE & AFTER WORSHIP:

In honor of World AIDS Day, testing is available before or after Worship.

TODAY'S LITURGIST:

ERICA GEORGE (she/they) is a Georgia native, but has lived in St Pete most of her life. She holds a Master of Social Work and works with individuals experiencing mental health crisis. She loves spoiling her cat, Cooper, Sunday brunches, and trying all kinds of coffee shops with her wife, Michaela. They serve Allendale as Chair of the Staff Parish Relations Committee, and sometimes you can also spot them singing or playing guitar on the Worship Band.

TODAY'S MUSICIANS:

guitar/vocals - Dylan Dames
piano - Tru Mizzell
bass - Matthew Blaine
vocals - Erica George
Our Christmas Choir will sing in Worship on Sun Dec 10. *Contact tru@allendaleumc.org to join our band or choir!*

COMMUNION PREPARERS:

Lynn Fruit, Priscilla Pridgen

COMMUNION SERVERS:

Cindy Burns, Debbie Duty, Deborah Eldred, Pam Green, Amy Mormino, Joe Ventimiglia, Theresa Frost, Clarissa Silveira

ANNOUNCEMENTS

COOKIE EXCHANGE:

Sun Dec 17 before or after Worship at the refreshments table. Leave cookies and take some cookies! You don't have to bring cookies to enjoy cookies.

SUNDAY MORNING GRIEF SUPPORT:

A grief support group is now meeting on Sunday mornings at 9 AM before worship in the Wesley Room. Everyone is welcome.
Visit: www.allendaleumc.org/grief

GMCTB CHRISTMAS CONCERT:

The Gay Men's Chorus of Tampa Bay are presenting a holiday concert: "Let There Be Peace" at Allendale UMC on Fri Dec 8 at 8 PM.
Tickets: www.gmctb.org/2023-2024

CELEBRATE OUTREACH CAROLING:

On Fri Dec 8 at 7 PM, join Celebrate Outreach for their 33rd Annual "Still No Room in the Inn." The group leaves from 100 Mirror Lake Dr and sings at homeless shelters and other sites in downtown St. Petersburg.

BRUNCH WITH SANTA:

Santa Claus is coming to Allendale for a delicious brunch buffet on Sat Dec 16 from 10 AM - 12 PM in the Community Center. Join us for food, Christmas crafts, reindeer games, and pictures with Santa! Tickets are \$5 or whatever you can afford. *Get tickets at: www.allendaleumc.org/santa*

STEWARDSHIP

PRAYERS

Donna Baxla: lung cancer treatments
Dan Leeper: cancer treatments
Karen Welling: health issues
Eunice Fisher: health issues
Joe Jacoby: cancer treatments
Donna Spear: loss of her mother on Nov 15

BIRTHDAYS:

Edwin Hotaling	Dec 4
Scott Brown	Dec 5
Jessica Throop	Dec 6
Michelle Taylor	Dec 7
Tori Nikkel	Dec 9
Donna Vollmer	Dec 9
Steven Geis	Dec 10
Ed Lally	Dec 12
Philip Dinkins	Dec 15
Devin Neitzert	Dec 16

Birthday missing? Please contact the office

CARE AND SUPPORT:

Rev. David Franks, Minister of Pastoral Support
 Office hours Tue 11-2 | Thu 4-7
 make an appointment for care by calling the church office at 727-527-6694

LICENSED THERAPISTS AND COUNSELORS:

available at Allendale's Counseling Center
 Visit www.allendaleumc.org/counseling

PRESENCE

Previous Sunday: 78 in-person, 245 online
 Livestream: www.allendaleumc.org/online

WANT TO JOIN ALLENDALE?

The next opportunity:
Sun Dec 10 at 10:30 AM
 Sign-up at: www.allendaleumc.org/join

GIFTS

Give online: www.allendaleumc.org/give
 Text-to-give: Text amount to 727-312-0808



Give Online now by scanning this code with your phone's camera

WITNESS

THE LAST TIME I SAW GOD:

Prayer by Rev. Sarah Speed

*The last time I saw God face to face
 I was looking at a bed of tulips.
 God was every color of red.
 I was merely a mortal,
 in awe of it all.*

*The time before that,
 we were tying back the curtains,
 looking for stars.
 God was the deepest purple
 and the brightest light.*

*The time before that,
 the city was soft with snow.
 God was the quiet
 that tucked us all in.*

*And in between these small gifts there were
 newborn babies,
 and sapling trees,
 homemade bread,
 the sound of a church
 singing on Sunday.*

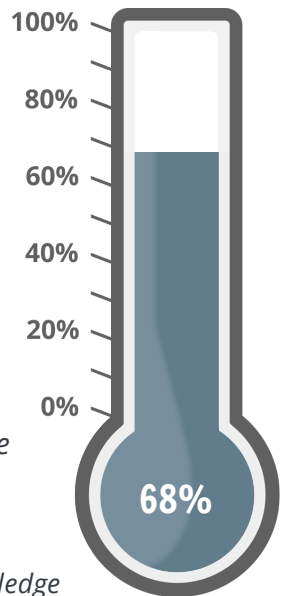
...

*Why, yes, we are lucky.
 We are more than lucky
 for the moments when
 delight and awe
 unzip the weight
 we carry around.*

\$222,571 of our
\$325,000 goal
 has been pledged
 as of Fri Dec 1.

*48 pledges
 representing 80 people*

Make your pledge at
www.allendalumc.org/pledge



FIRST SUNDAY IN ADVENT

How does a weary world rejoice?
We acknowledge our weariness

Let us know you are here by going to www.allendaleumc.org/here or by filling out the attendance pad in your row.

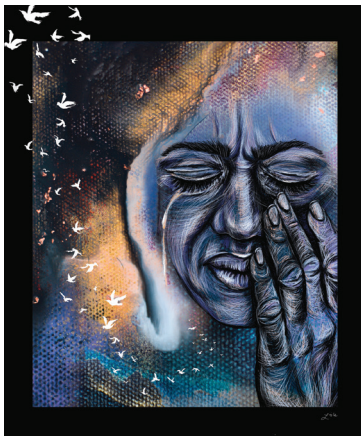
- PRELUDE** Music Video
Sing It True |Speed, Olgun|
- WELCOME** Rev. Andy Oliver
Allendale United Methodist Church is a Reconciling Congregation. We affirm the sacred worth of all people and strive to practice Christ's example of unconditional love without exclusion. All are welcome to participate fully in the life and ministries of this congregation. Whatever your race, ethnicity, economic situation, sexual orientation, gender identity or expression, background or belief, age or condition of ableness, whether single or partnered, you are God's beloved and are welcome here. God calls us to acts of love, grace, and advocacy to promote healing and reconciliation. We are building a new Allendale: a place without barriers, a sanctuary for all.
- SONG** Allendale Band
Waiting For You |The Many|
- CALL TO WORSHIP & AFFIRMATION OF FAITH** Erica George
- LIGHTING THE ADVENT CANDLES** Congregation
Candle of Hope |Gillette|
- PRAYER OF CONFESSION & WORDS OF FORGIVENESS** Rev. David Franks
- TIME WITH CHILDREN** Theresa Frost
- OFFERING** Congregation
Come Thou Long Expected Jesus |Wesley|
give online at www.allendaleumc.org/give
- PRAYERS OF THE PEOPLE** Rev. David Franks
- POEM** Rose Cervantes
Wade In |by Rev. Sarah Speed|sanctifiedart.org|
- SONG** Allendale Band
Weary World Rejoice |Strickland, Gruber|
- PRAYER FOR ILLUMINATION & SCRIPTURE** Erica George
Luke 1:5-7, 10-19 & Psalm 80:1, 3-7, 17-19
- SERMON** Rev. Andy Oliver
- COMMUNION** Congregation
Come As You Are |Crowder|
- CONNECTING WITH THE COMMUNITY** Theresa Frost
- BENEDICTION** Erica George
- POSTLUDE** Allendale Band



"Annunciation to Zechariah" by Rev. Lauren Wright Pittman

LUKE 1:1-23

What would it look like to acknowledge our weariness, quit powering through, and open ourselves up to what God might have in store for us? Perhaps we'll meet an angel.



"Make Your Face Shine" by Rev. Lisle Gwynn Garrity

PSALM 80:1-7, 17-19

Politeness is not the language of the weary. The psalmist supplied me with the words I wanted to pray, the words I wanted to scream: 'Wake up your power, God! Save us! How long?!

"HOW DOES A WEARY WORLD REJOICE"

Theme, Liturgy, and Images from *The Sanctified Art*

Rev. Andy Oliver, Pastor | andy@allendaleumc.org

Rev. David Franks, Minister of Pastoral Support | david@allendaleumc.org

Clarissa Silveira, Church Administrator | clarissa@allendaleumc.org

Tru Mizzell, Director of Music Development | tru@allendaleumc.org

Theresa Frost, Director of Student Ministries | theresa@allendaleumc.org

Cameron Helwege, Creative Director | cameron@allendaleumc.org

Dylan Dames, Music and Organizing Associate | dylan@allendaleumc.org

Aaron Bennett, Maintenance | aaron@allendaleumc.org

Bill Lee | Organist

Maria Davidson | Nursery Coordinator

Madison Redington, Erin Giblin,

Courtney Ross | Nursery Attendants

Dr. Kate Pravera | Theologian in Residence

All of us in the Congregation | Ministers of the Gospel

THIS WEEK

Sun Dec 3

- 9 AM Poverty, By America Book Study (CC)
- 9 AM Grief Support Group (Wesley)
- 10:30 AM Worship Service (Sanctuary)
- 5 PM Crystal Meth Anon (Tubman)
- 5:30 PM Youth Group (Wesley, Kitchen, Youth)

Mon Dec 4

- 1 PM United Women in Faith Lunch (Offsite)
- 5 PM Community Qi Gong (Community Center)
- 6 PM Scripture Class (Zoom)
- 6:30 PM AA Common Peril (Bill W.)
- 8 PM AA Go After Sobriety (Rustin & Tubman)

Tue Dec 5

Wed Dec 6

- 5 PM Dinner at Allendale (Community Center)
- 6 PM Visio Divina Class (CC)
- 8 PM AA Go After Sobriety (Rustin)

Thu Dec 7

- 9 AM Chit Chat (Zoom)
- 7 PM AA Home Group (Bill W.)

Fri Dec 8

- 7:30 PM AA Common Peril (Bill W.)
- 8 PM Gay Men's Chorus Concert (Sanctuary)
- 8 PM AA Go After Your Sobriety (Rustin)

Sat Dec 9

- 9:30 AM AA Women's Reflection (Bill W.)
- 10 AM CCC Training (Wesley)

Sun Dec 10

- 9 AM Poverty, By America Book Study (CC)
- 9 AM Grief Support Group (Wesley)
- 10:30 AM Worship Service (Sanctuary)
- 5 PM Crystal Meth Anon (Tubman)
- 5:30 PM Youth Group (Wesley, Kitchen, Youth)

DINNER MENU

Wed Dec 6

Club Sandwich on Butter Croissant, Cheddar Broccoli/Vegetable Soups, Salad, Dessert

ONGOING CLASSES

Book Study - *Sun at 9 AM*

"Poverty, By America"

Grief Support Group - *Sun at 9 AM*

Scripture Class on Zoom - *Mon at 6 PM*

Join via Zoom: www.allendaleumc.org/online

Wednesday Night Classes - *Wed at 6 PM*

Visio Divina: Meditation and Art Discussion