

# ALLENDALE

UNITED METHODIST CHURCH

JANUARY 22, 2023

3803 Haines Road North  
St. Petersburg, FL 33703

(727) 527-6694  
office@allendaleumc.org

www.allendaleumc.org

## WELCOME

**Allendale United Methodist Church** is a Reconciling Congregation. We affirm the sacred worth of all people and strive to practice Christ's example of unconditional love without exclusion. All are welcome to participate fully in the life and ministries of this congregation. Whatever your race, ethnicity, economic situation, sexual orientation, gender identity or expression, background or belief, age or condition of ableness, whether single or partnered, you are God's beloved and are welcome here. God calls us to acts of love, grace, and advocacy to promote healing and reconciliation. We are building a new Allendale: a place without barriers, a sanctuary for all.

**Office Hours: Mon - Thu, 9 AM to 3 PM**

We are honored that you chose to worship with us today! To learn more about the life of the church, if you have a special need, or you wish to visit with the pastor, please contact Beth in the office at 727.527.6694, office@allendaleumc.org.

**Gender Pronouns:** Asking and correctly using someone's correct pronoun is one of the most basic ways to show your respect for their gender identity. When someone is referred to with the wrong pronoun, it can do harm.

**Childcare/Nursery:** Located in the courtyard, the first room to the right as you leave the sanctuary building. Children are welcomed and encouraged to stay in worship, even if they are noisy! The nursery is available beginning at 10 AM for children younger than kindergarten.

**Children's activity sheets** and fidget bags are available in the narthex.

**Changing table** is available in the Nursery.

**Unisex/family restrooms** are accessible from the narthex, to the left as you exit the sanctuary.

**The balcony** is open for those wishing to have more social distancing.

**Holy Communion** is typically celebrated on the first Sunday of the month.

**Masks** are required while on campus at Allendale to protect the most vulnerable.

**Zoom** links for Allendale's virtual events can be found at [www.allendaleumc.org/online](http://www.allendaleumc.org/online).

## UPCOMING EVENTS

- Jan 27-29 SingFest 2023 - a festival for those who identify as women (Allendale)  
*Register at [www.singfestfl.com/applications](http://www.singfestfl.com/applications)*
- Sat Feb 11 Parents' Night Out (Allendale) 5 PM  
*Learn more at [www.allendaleumc.org/nightout](http://www.allendaleumc.org/nightout)*
- Sun Feb 12 New Member Sunday (Sanctuary) 10:30 AM  
*Sign-up at [www.allendaleumc.org/join](http://www.allendaleumc.org/join)*
- Mon Feb 13 Get to know our new Bishop Tom Berlin (The Portico Cafe, Tampa) 9 AM
- Mon Mar 27 FAST Nehemiah Action (Indian Rocks Baptist Church) 7 PM

*Get more information about our upcoming events by visiting: [www.allendaleumc.org/events](http://www.allendaleumc.org/events)*

## WORSHIP NOTES

### TODAY'S SPEAKER:

**JULIE ROCCO** is engaged in initiatives that includes food systems, housing and homelessness, behavioral health, LGBTQ+ efforts, environmental quality, economic development, and the arts. She describes her work as a balance of community engagement and challenging the traditional status quo.

### TODAY'S LITURGIST:

**ERICA GEORGE** (she/they) is a Georgia native, but has lived in St Pete most of her life. She holds a Master of Social Work and works with individuals experiencing mental health crisis. She loves her pets, Uva and Cooper, Sunday brunch, and trying all kinds of coffee shops with her wife, Michaela. They serve Allendale as Chair of the Staff Parish Relations Committee, and sometimes you can also spot them singing or playing guitar on the Worship Band.

### TODAY'S WORSHIP BAND:

piano - Tru Mizzell  
guitar/vocals - Dylan Dames  
vocals - Michelle Taylor  
organist - Bill Lee

*Contact [tru@allendaleumc.org](mailto:tru@allendaleumc.org)  
to join our band or choir*

## ANNOUNCEMENTS

### FAST INFORMATIONAL MEETING:

Jacqueline Reyes will be talking about FAST (Faith and Action for Strength Together) on Sun Jan 29 at 9:30 AM in the Wesley room. Allendale is part of FAST, a coalition of dozens of local faith communities working together to build a better Pinellas. This is a chance to learn about some of the local issues including affordable housing and criminal justice that FAST hopes to address. You will also hear about ways to get involved like the March 27 Nehemiah Action and other upcoming events.

### SINGFEST:

Allendale will be hosting SingFest, a festival with singing, drumming, dancing, writing, and various workshops. This event, for those who identify as women, will begin Fri, Jan 27 and continue through Sun, Jan 29.

*Learn more at: [www.singfestfl.com](http://www.singfestfl.com)*

### PARENTS' NIGHT OUT:

Need a night out? We'll take care of your kids (age 10 and under) for free for a few hours on Sat Feb 11 from 5-8 PM so you can have a date night out. We'll have light snacks, arts & crafts, and other activities for your younger children. *You must pre-register at [www.allendaleumc.org/nightout](http://www.allendaleumc.org/nightout).*

# STEWARDSHIP

## PRAYERS

**Debbie Duty:** cousin's open heart surgery  
**Donna Baxla:** lung cancer treatments  
**Dan Leeper:** cancer treatments  
**Karen Welling:** health issues  
**Eunice Fisher:** health issues  
**Bobbie Windle:** cancer treatments  
**Ruth Spangler:** recovering from a minor stroke

## BIRTHDAYS:

Nicole DeVore	Jan 22
Tom Dunn	Jan 22
DeDe Trapp	Jan 22
Jonna Hunt	Jan 23
Bobbie Windle	Jan 27
Dee Miller	Jan 28
Maria Davidson	Jan 29
Kathleen Howard	Jan 29
Megan Lopez	Feb 6

*Birthdays missing? Please contact the office*

## CARE AND SUPPORT:

Rev. David Franks, Minister of Pastoral Support  
 Office hours Tue 11-2 | Thu 4-7  
 make an appointment by calling the church office at 727-527-6694

## LICENSED THERAPISTS AND COUNSELORS:

available at Allendale's Counseling Center  
 Visit [www.allendaleumc.org/therapy](http://www.allendaleumc.org/therapy)

## PRESENCE

Previous Sunday: 78 in-person, 152 online  
 Livestream: [www.allendaleumc.org/online](http://www.allendaleumc.org/online)

## GIFTS

Give online: [www.allendaleumc.org/give](http://www.allendaleumc.org/give)  
 Text-to-give: Text amount to 727-312-0808

## SETTING UP AUTOMATIC ONLINE GIVING:

Contact Yadi to set up online giving. Thank you so much for your investment in our collective work of liberation.



*Give Online now by scanning this code with your phone's camera*

## WITNESS

### ALLENDALE'S COUNSELING CENTER:

A year ago, we finished renovations to the old flea market space at the church and dedicated it to serving community mental health and counseling needs.

Since the Counseling Center opened, therapists, counselors, and psychologists working out of the new space have served over 100 clients with in-person sessions and online remote sessions.

The counselors at Allendale are licensed, LGBTQ+ affirming, equipped to help process trauma, and can empower you to set boundaries and create a new future.

If you would like to get connected with one of the counselors at Allendale, *visit:* [www.allendaleumc.org/counseling](http://www.allendaleumc.org/counseling)



**Dr. Brittany Peters**  
 Licensed Clinical Social Worker



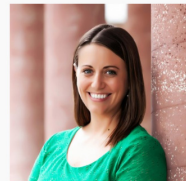
**Stephanie Lindeman**  
 Licensed Mental Health Counselor



**Jennifer Schaap**  
 Licensed Marriage and Family Therapist



**Dr. Zack Isoma, Psy.D.**  
 Licensed Doctor of Psychology



**Shannon Wright**  
 Licensed Mental Health Counselor



# ORDER OF WORSHIP

*Let us know you are here by going to [www.allendaleumc.org/here](http://www.allendaleumc.org/here)*

PRELUDE ..... Bill Lee

*On the First Day of the Week* |Lani Smith|

WELCOME ..... Rev. Andy Oliver

*Allendale United Methodist Church is a Reconciling Congregation. We affirm the sacred worth of all people and strive to practice Christ's example of unconditional love without exclusion. All are welcome to participate fully in the life and ministries of this congregation. Whatever your race, ethnicity, economic situation, sexual orientation, gender identity or expression, background or belief, age or condition of ableness, whether single or partnered, you are God's beloved and are welcome here. God calls us to acts of love, grace, and advocacy to promote healing and reconciliation. We are building a new Allendale: a place without barriers, a sanctuary for all.*

SONG ..... Allendale Band

*Open My Eyes* |Manibusin|

CALL TO WORSHIP & PRAYER ..... Erica George

SONG ..... Allendale Band

*How Can We Sing a Joyful Song* |Gillette|

TIME WITH CHILDREN ..... Rev. Andy Oliver

OFFERING ..... Congregation

*Help!* |Lennon, McCartney|  
*give online at [www.allendaleumc.org/give](http://www.allendaleumc.org/give)*

PRAYER OF DEDICATION ..... Erica George

SONG ..... Allendale Band

*Holy Darkness* |Schutte|

SCRIPTURE ..... Erica George

*Psalm 88*

SERMON ..... Julie Rocco

SONG ..... Allendale Band

*Stand* |McClurkin|

CONNECTING WITH THE COMMUNITY ..... Theresa Frost

BENEDICTION ..... Erica George

POSTLUDE ..... Bill Lee

*Celebration* |Hughes|



### PSALM 88

A cry of suffering from the depths of darkness and despair, it was unflinching. In 18 short lines, Psalm 88 is the perfect summation of the human experience of sorrow and abandonment.

And it's directed to God!  
There's no mistaking it: the psalmist is blaming God, with no obsequious tone or assurance that rescue is forthcoming. They're asking where are you? Why did you do this to me? Why me?

The form of the psalm itself is an act of faith. As the psalmist drowns, they cling desperately to God. They fear death, because death is no more than a pit, and it will separate them from the God they love.

Though the psalmist addresses the God of salvation in the first line, there is no hope of salvation beyond that pit. In Psalm 88, death breaks the relationship of humanity and God.

*Image from Unsplash  
Liturgy from Enfleshed*

*Psalm 88 Commentary by Thomas L. McDonald*

Rev. Andy Oliver, Pastor | [andy@allendaleumc.org](mailto:andy@allendaleumc.org)

Rev. David Franks, Minister of Pastoral Support | [david@allendaleumc.org](mailto:david@allendaleumc.org)

Tru Mizzell, Music Development | [tru@allendaleumc.org](mailto:tru@allendaleumc.org)

Theresa Frost, Children/Youth | [theresa@allendaleumc.org](mailto:theresa@allendaleumc.org)

Yadi Rivers, Community | [yadi@allendaleumc.org](mailto:yadi@allendaleumc.org)

Cameron Helwege, Creative Director | [cameron@allendaleumc.org](mailto:cameron@allendaleumc.org)

Beth Jones, Church Administrator | [beth@allendaleumc.org](mailto:beth@allendaleumc.org)

Aaron Bennett, Maintenance | [aaron@allendaleumc.org](mailto:aaron@allendaleumc.org)

Bill Lee | Organist

Maria Davidson | Nursery Coordinator

Madison Redington, Hannah Newton, Erin Giblin,

Courtney Ross | Nursery Attendants

Dr. Kate Pravera | Theologian in Residence

All in the Congregation | Ministers of the Gospel

## THIS WEEK

For a listing of virtual meetings, go to:  
[www.allendaleumc.org/online](http://www.allendaleumc.org/online).

### Sun Jan 22

10:30 AM Worship Service (Sanctuary)

5 PM AA Crystal Meth Anon (Tubman)

5:30 PM Youth Group (Wesley, Kitchen, Youth)

### Mon Jan 23

7:30 PM AA Common Solutions (Bill W.)

8 PM AA Go After Sobriety (Rustin & Tubman)

### Tue Jan 24

6 PM W. Wesley Cooking w/ Friends (Kitchen)

### Wed Jan 25

5 PM Wednesday Night Dinner (CC)

6 PM Scripture Class (Room 109 & Zoom)

6 PM Allendale 101 (Community Center)

8 PM AA Go After Sobriety (Rustin)

### Thu Jan 26

9 AM Chit Chat (Zoom)

7 PM AA Home Group (Bill W.)

### Fri Jan 27

7:30 PM AA Common Solutions (Bill W.)

8 PM AA Go After Your Sobriety (Rustin)

### Sat Jan 28

9:30 AM AA Women's Reflection (Bill W.)

### Sun Jan 29

10:30 AM Worship Service (Sanctuary)

5 PM AA Crystal Meth Anon (Tubman)

5:30 PM Youth Group (Wesley, Kitchen, Youth)

Subscribe to the Allendale Calendar:  
[www.allendaleumc.org/calendar](http://www.allendaleumc.org/calendar)

### WEDNESDAY NIGHT DINNER:

Join us on Wednesday nights in the

Community Center for a meal at 5 PM

followed by classes at 6 PM.

Dinner is \$10 or whatever you can afford.

Learn more and RSVP at:

[www.allendaleumc.org/wednesdays](http://www.allendaleumc.org/wednesdays)