



ALLENDALE

UNITED METHODIST CHURCH

DECEMBER 18, 2022

3803 Haines Road North
St. Petersburg, FL 33703

(727) 527-6694
office@allendaleumc.org

www.allendaleumc.org

WELCOME

Allendale United Methodist Church is a Reconciling Congregation. We affirm the sacred worth of all people and strive to practice Christ's example of unconditional love without exclusion. All are welcome to participate fully in the life and ministries of this congregation. Whatever your race, ethnicity, economic situation, sexual orientation, gender identity or expression, background or belief, age or condition of ableness, whether single or partnered, you are God's beloved and are welcome here. God calls us to acts of love, grace, and advocacy to promote healing and reconciliation. We are building a new Allendale: a place without barriers, a sanctuary for all.

Office Hours: Mon - Thu, 9 AM to 3 PM

We are honored that you chose to worship with us today! To learn more about the life of the church, if you have a special need, or you wish to visit with the pastor, please contact Beth in the office at 727.527.6694, office@allendaleumc.org.

Gender Pronouns: Asking and correctly using someone's correct pronoun is one of the most basic ways to show your respect for their gender identity. When someone is referred to with the wrong pronoun, it can do harm.

Childcare/Nursery: Located in the courtyard, the first room to the right as you leave the sanctuary building. Children are welcomed and encouraged to stay in worship, even if they are noisy! The nursery is available beginning at 10 AM for children younger than kindergarten.

Children's activity sheets and fidget bags are available in the narthex.

Changing table is available in the Nursery.

Unisex/family restrooms are accessible from the narthex, to the left as you exit the sanctuary.

The balcony is open for those wishing to have more social distancing.

Holy Communion is typically celebrated on the first Sunday of the month.

Masks are required while on campus at Allendale to protect the most vulnerable.

Zoom links for Allendale's virtual events can be found at www.allendaleumc.org/online.

UPCOMING EVENTS

- Sun Dec 18 Soul Food Xmas Lunch & Cookie Exchange (Community Center) 11:30 AM
www.allendaleumc.org/soul. Lunch: \$15 adult, \$5 child, or pay what you can.
- Wed Dec 21 Longest Night Worship Service (Sanctuary) 6 PM
- Fri Dec 23 Impromptu Christmas Pageant (Sanctuary) 6 PM
- Sat Dec 24 Christmas Eve Candlelight Service (Sanctuary) 6 PM
- Sun Dec 25 Christmas Morning Worship Service (Sanctuary) 10:30 AM
- Sun Jan 1 New Years Day Epiphany Sunday Worship Service (Sanctuary) 10:30 AM
- Fri Jan 6 St. Creaturesburg Open Mic Night (Sanctuary) 8:30 PM
- Sun Jan 8 New Member Sunday (Sanctuary) 10:30 AM
Sign-up at allendaleumc.org/join

Get more information about our upcoming events by visiting: www.allendaleumc.org/events

WORSHIP NOTES

TODAY'S LITURGIST:

SHEILA STEWART (she/her/hers) grew up on Madeira Beach in a retired Air Force family with four siblings. She is an educator, an anthropologist and an archaeologist, recently retired from Pinellas County Schools. Her passions for social justice include bringing the native peoples of Florida back into our historical heritage, particularly those who first made Pinellas and Weedon Island their home. Among her interests are music, movies, taking hikes in nature, and travel. She lives in St. Petersburg with her husband John Stewart (not that Jon Stewart) and housecat Lena Tiggy-winkle.

TODAY'S WORSHIP BAND:

piano - Tru Mizzell
vocals - Erica George

*Contact tru@allendaleumc.org
to join our band or choir*

WANT TO JOIN ALLENDALE?

The next opportunity:

Sun Jan 8 at 10:30 AM

Sign-up at: www.allendaleumc.org/join



Give Online now by scanning this code with your phone's camera

ANNOUNCEMENTS

KEITH GLASSCOCK CELEBRATION OF LIFE:

Prayers for Jonna and all of Keith Glasscock's family on his passing. A service for Keith will be held today at 1 PM following lunch.

LONGEST NIGHT WORSHIP SERVICE:

Wed, Dec 21 at 6 PM, we will gather in the sanctuary for a Worship Service on the Winter Solstice (the longest period of darkness all year) specifically creating space for grief, sadness, loss, and hope. It is also an opportunity to come and be present with our siblings who need community.

IMPROMPTU CHRISTMAS PAGEANT:

Fri, Dec 23 at 6 PM, Come enjoy the joy of children as they dress up as whatever nativity character they want to in order to tell us the Christmas story as its never been told before.

CHRISTMAS EVE CAROLS & CANDLELIGHT:

Sat, Dec 24 at 6 PM, Hear the Christmas story again with carols and concluding with and outdoor candlelight Silent Night.

CHRISTMAS MORNING WORSHIP:

Sun, Dec 25 at 10:30 AM we gather for worship on Christmas morning. Come in your pajamas if you want. Children are invited to bring a favorite toy to show and tell. We will have a hot cocoa station!

STEWARDSHIP

PRAYERS

Debbie Duty: cousin's open heart surgery
Tom Simpson: recovering from fractured femur
Donna Baxla: lung cancer treatments
Dan Leeper: cancer treatments
Bobbie Windle: cancer treatments
Jonna Hunt: loss of husband, Keith Glasscock
Ruth Spangler: recovering from a minor stroke

UPCOMING BIRTHDAYS:

Ruth Spangler	Dec 19
Greg Davidson	Dec 21
Chris Reich	Dec 22
Miguel Iturralde	Dec 25
Gunnar Foster	Dec 29
Courtney Ross	Dec 29
Laura Hutton	Dec 30
Jacqueline Reyes	Jan 1
Kain Arenz	Jan 2

Birthdays missing? Please contact the office

CARE AND SUPPORT:

Rev. David Franks, Minister of Pastoral Support
Office hours Tue 11-2 | Thu 4-7
make an appointment by calling the church
office at 727-527-6694

LICENSED THERAPISTS AND COUNSELORS:

available at Allendale's Counseling Center
Visit: www.allendaleumc.org/therapy

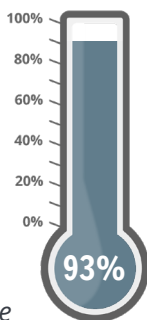
PRESENCE

Previous Sunday: 82 in-person, 192 online
Livestream: www.allendaleumc.org/online

GIFTS

Give online: www.allendaleumc.org/give
Text-to-give: Text amount to 727-312-0808
Amazon Smile: Allendale United Methodist

\$279,134 of our
\$300,000 goal
has been pledged
as of Thu Dec 15.



Make your pledge at:
www.allendalumc.org/pledge

WITNESS

WHERE I SAW GOD LAST:

The dimple in your right cheek, the child playing peek-a-boo from his stroller, the abuelita who spends her afternoons in the park by 86th; the teenagers on the subway who cannot control their laughter; Neil, my neighbor, who always asks about you, the mother who whispers a dozen times a day, "thank you, Jesus, thank you, Jesus, thank you, Jesus"; the saxophone player at 42nd street, the poets, the artists, the garden volunteers; the metro car driver who sticks his head out the window to make sure we're all aboard; the man who gave up his seat on the subway, the kid in the dinosaur pajamas who cannot be convinced they're not school attire; the teachers, the nurses, the taxi cab drivers; the woman at the end of the block with her yappy dogs and her books in the window, the lovers that lay sprawled out on park blankets, the runners, the daydreamers, the sidewalk chalk artists; John from upstairs whose favorite flowers are yellow tulips, the Persian man at the grocery who tells me to be safe when I leave, my grandmother in Georgia; my neighbor, the stranger; *thank you, Jesus, thank you, Jesus, thank you, Jesus.*

A Poetry Prayer by Rev. Sarah (Are) Speed (she/her)
A Sanctified Art LLC | sanctifiedart.org.
You can find her daily poems on
Instagram and Facebook:

@writingthegood | writingthegood.com

Download our Advent devotional book at
www.allendaleumc.org/advent

MEAL TRAIN FOR LORIN AND DONNA:

The Allendale community is showing love to the Baxlas while they face health challenges.
Sign-up and learn more at:
www.allendaleumc.org/baxla.



FOURTH SUNDAY IN ADVENT

We see God in each other

Let us know you are here by going to www.allendaleumc.org/here

PRELUDE Bill Lee

WELCOME Rev. Andy Oliver

Allendale United Methodist Church is a Reconciling Congregation. We affirm the sacred worth of all people and strive to practice Christ's example of unconditional love without exclusion. All are welcome to participate fully in the life and ministries of this congregation. Whatever your race, ethnicity, economic situation, sexual orientation, gender identity or expression, background or belief, age or condition of ableness, whether single or partnered, you are God's beloved and are welcome here. God calls us to acts of love, grace, and advocacy to promote healing and reconciliation. We are building a new Allendale: a place without barriers, a sanctuary for all

SONG Allendale Band

From Generation to Generation |Burns|

CALL TO WORSHIP & AFFIRMATION OF FAITH Sheila Stewart

LIGHTING THE ADVENT CANDLES Congregation

The Candle of Love |Gillette|

PRAYER OF CONFESSION & WORDS OF FORGIVENESS Sheila Stewart

OFFERING Allendale Band

Canticle of the Turning |Daigle, Cooney, Donohoo|
give online at www.allendaleumc.org/give

PRAYERS OF THE PEOPLE Rev. David Franks

The Lord's Prayer |Miller|

POEM Hannah Newton

Where I Saw God Last |by Rev. Sarah Speed|sanctifiedart.org|

SONG Allendale Band

From Generation to Generation Reprise |Burns|

PRAYER FOR ILLUMINATION & SCRIPTURE Sheila Stewart

Luke 1:39-58

SERMON Rev. Andy Oliver

SONG Allendale Band

Mary Did You Know? |Henry|

CONNECTING WITH THE COMMUNITY Theresa Frost

BENEDICTION Sheila Stewart

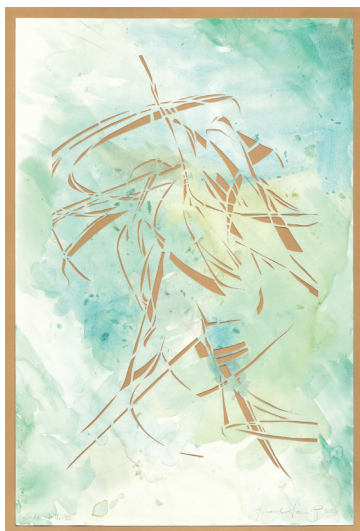
POSTLUDE Bill Lee



by Carmelle Beaugelin

LUKE 1:39-45; 56-58

Despite their difference in age, the two cousins find comfort in each other in the midst of the unconventional timing of their expanding families. Mary and Elizabeth themselves are cradled by the guiding arms of the God who moves them beyond cousins into sisterhood.



by Hannah Garrity

LUKE 1:46-55

The energy of Mary's soul creates a trinitarian flow as she rejoices in the hope, the healing, and the freedom from oppression that her son will provide as a precedent for generations to come.

"From Generation to Generation"
advent theme, liturgy, and artwork
© A Sanctified Art LLC | sanctifiedart.org

Rev. Andy Oliver, Pastor | andy@allendaleumc.org
Rev. David Franks, Minister of Pastoral Support | david@allendaleumc.org
Tru Mizzell, Music Development | tru@allendaleumc.org
Theresa Frost, Children/Youth | theresa@allendaleumc.org
Cameron Helwege, Creative Director | cameron@allendaleumc.org
Beth Jones, Church Administrator | beth@allendaleumc.org
Aaron Bennett, Maintenance | aaron@allendaleumc.org
Bill Lee | Organist
Maria Davidson | Nursery Coordinator
Madison Redington, Hannah Newton, Erin Giblin,
Courtney Ross | Nursery Attendants
Dr. Kate Pravera | Theologian in Residence
All in the Congregation | Ministers of the Gospel

THIS WEEK

For a listing of virtual meetings, go to:
www.allendaleumc.org/online.

Sun Dec 18

10:30 AM Worship Service (Sanctuary)
11:30 AM Soul Food Lunch (Community Ctr.)
1:00 PM Celebration of Life (Sanctuary)
5 PM AA Crystal Meth Anon (Tubman)
5:30 PM Youth Group (Wesley, Kitchen, Youth)

Mon Dec 19

7:30 PM AA Common Solutions (Bill W.)
8 PM AA Go After Sobriety (Rustin & Tubman)

Tue Dec 20

Wed Dec 21

6 PM Longest Night Service (Sanctuary)
6 PM Scripture Class (Zoom)
8 PM AA Go After Sobriety (Rustin)

Thu Dec 22

9 AM Chit Chat (Zoom)
7 PM AA Home Group (Bill W.)

Fri Dec 23

6 PM Impromptu Christmas Pageant (Sanct.)
7:30 PM AA Common Solutions (Bill W.)
8 PM AA Go After Your Sobriety (Rustin)

Sat Dec 24

9:30 AM AA Women's Reflection (Bill W.)
6 PM Christmas Eve Service (Sanctuary)

Sun Dec 25

10:30 AM Worship Service (Sanctuary)
5 PM AA Crystal Meth Anon (Tubman)

Subscribe to the Allendale Calendar:
www.allendaleumc.org/calendar.