



# ALLENDALE

UNITED METHODIST CHURCH

DECEMBER 4, 2022

3803 Haines Road North  
St. Petersburg, FL 33703

(727) 527-6694  
office@allendaleumc.org

www.allendaleumc.org

## WELCOME

**Allendale United Methodist Church** is a Reconciling Congregation. We affirm the sacred worth of all people and strive to practice Christ's example of unconditional love without exclusion. All are welcome to participate fully in the life and ministries of this congregation. Whatever your race, ethnicity, economic situation, sexual orientation, gender identity or expression, background or belief, age or condition of ableness, whether single or partnered, you are God's beloved and are welcome here. God calls us to acts of love, grace, and advocacy to promote healing and reconciliation. We are building a new Allendale: a place without barriers, a sanctuary for all.

**Office Hours: Mon - Thu, 9 AM to 3 PM**

We are honored that you chose to worship with us today! To learn more about the life of the church, if you have a special need, or you wish to visit with the pastor, please contact Beth in the office at 727.527.6694, office@allendaleumc.org.

**Gender Pronouns:** Asking and correctly using someone's correct pronoun is one of the most basic ways to show your respect for their gender identity. When someone is referred to with the wrong pronoun, it can do harm.

**Childcare/Nursery:** Located in the courtyard, the first room to the right as you leave the sanctuary building. Children are welcomed and encouraged to stay in worship, even if they are noisy! The nursery is available beginning at 10 AM for children younger than kindergarten.

**Children's activity sheets** and fidget bags are available in the narthex.

**Changing table** is available in the Nursery.

**Unisex/family restrooms** are accessible from the narthex, to the left as you exit the sanctuary.

**The balcony** is open for those wishing to have more social distancing.

**Holy Communion** is typically celebrated on the first Sunday of the month.

**Masks** are required while on campus at Allendale to protect the most vulnerable.

**Zoom** links for Allendale's virtual events can be found at [www.allendaleumc.org/online](http://www.allendaleumc.org/online).

## UPCOMING EVENTS

- Fri Dec 9 Still... No Room in the Inn Christmas Caroling (100 Mirror Lake Dr) 7 PM  
*More information at [www.celebrateoutreach.org](http://www.celebrateoutreach.org).*
- Fri Dec 9 Gay Men's Chorus of Tampa Bay Peace and Joy Concert (Sanctuary) 8 PM  
*Get tickets at [www.gmctb.org/peace-and-joy](http://www.gmctb.org/peace-and-joy). \$20 for adults, \$5 for students.*
- Fri Dec 16 Homeless Persons' Memorial Service (100 Mirror Lake Dr) 4:30 PM  
*More information at [www.celebrateoutreach.org](http://www.celebrateoutreach.org).*
- Sat Dec 17 Brunch With Santa (Community Center) 10 AM  
*Get tickets at [www.allendaleumc.org/santa](http://www.allendaleumc.org/santa). \$5 each or pay what you can.*
- Wed Dec 21 Longest Night Worship Service (Sanctuary) 6 PM
- Fri Dec 23 Impromptu Christmas Pageant (Sanctuary) 6 PM
- Sat Dec 24 Christmas Eve Candlelight Service (Sanctuary) 6 PM
- Sun Dec 25 Christmas Morning Worship Service (Sanctuary) 10:30 AM
- Sun Jan 1 New Years Day Epiphany Sunday Worship Service (Sanctuary) 10:30 AM

*Get more information about our upcoming events by visiting: [www.allendaleumc.org/events](http://www.allendaleumc.org/events)*

## WORSHIP NOTES

### TODAY'S LITURGIST:

**LYNN HAWKINS** (she/her/hers) was born in Colombia, South America. Her family immigrated to the US when she was two, and she grew up in Tampa. She has a daughter, Celina Hawkins, and 3 cats. Lynn's career is that of a Technology Project Manager. She previously served as Co-Chair of Allendale's Church Council for two years.

### TODAY'S WORSHIP BAND:

piano - Tru Mizzell  
guitar/vocals - Dylan Dames  
organist - Bill Lee

Our choir will sing in Worship on Dec 11!

*Contact [tru@allendaleumc.org](mailto:tru@allendaleumc.org)  
to join our band or choir*

### WANT TO JOIN ALLENDALE?

The next opportunity:

**Sun Dec 11 at 10:30 AM**

*Sign-up at: [www.allendaleumc.org/join](http://www.allendaleumc.org/join)*

## ANNOUNCEMENTS

### WE SUPPORT TRANS YOUTH:

At 4 PM on Sun, Dec 4, We are rallying at City Hall (175 5th St N.) to show our support for Trans Youth in Pinellas County, and to reject the decision from the Florida Board of Medicine to ban Gender-Affirming care to minors in Florida.

### HOLIDAY TOY DRIVE:

Allendale member and State Representative Michele Rayner-Goolsby is inviting us to help her office collect new, unwrapped toys for kids this holiday season! Bring them to Allendale Dec 5-16, weekdays between 7 AM to 3 PM or on Sunday to worship.

### HOMELESS MEMORIAL SERVICE:

For some who died, the Homeless Persons' Memorial Service on Fri, Dec 16 at 4:30 PM will be the only service marking their passing. This service at Unitarian Universalist Church St Pete (100 Mirror Lake Dr) will include reading the names of those who died, scripture, singing, and bagpipes.

# STEWARDSHIP

## PRAYERS

**Debbie Duty:** cousin's open heart surgery  
**Tom Simpson:** recovering from fractured femur  
**Donna Baxla:** lung cancer treatments  
**Dan Leeper:** cancer treatments  
**Bobbie Windle:** cancer treatments  
**Ruth Spangler:** recovering from a minor stroke

## UPCOMING BIRTHDAYS:

Edwin Hotaling	Dec 4
Scott Brown	Dec 5
Jessica Throop	Dec 6
Michelle Taylor	Dec 7
Tori Nikkel	Dec 9
Donna Vollmer	Dec 9
Brandon Wise	Dec 9
Philip Dinkins	Dec 15
Ed Lally	Dec 15
Jim Light	Dec 17
Ruth Spangler	Dec 19
Greg Davidson	Dec 21

*Birthdays missing? Please contact the office*

## CARE AND SUPPORT:

Rev. David Franks, Minister of Pastoral Support  
 Office hours Tue 11-2 | Thu 4-7  
 make an appointment by calling the church  
 office at 727-527-6694

## LICENSED THERAPISTS AND COUNSELORS:

available at Allendale's Counseling Center  
 Visit [www.allendaleumc.org/therapy](http://www.allendaleumc.org/therapy)

## PRESENCE

Previous Sunday: 63 in-person, 197 online  
 Livestream: [www.allendaleumc.org/online](http://www.allendaleumc.org/online)

## GIFTS

Give online: [www.allendaleumc.org/give](http://www.allendaleumc.org/give)  
 Text-to-give: Text amount to 727-312-0808  
 Amazon Smile: Allendale United Methodist

## SETTING UP AUTOMATIC ONLINE GIVING:

Contact Beth to set up online giving. Thank you so much for your investment in our collective work of liberation.



*Give Online now by scanning this code with your phone's camera*

## WITNESS

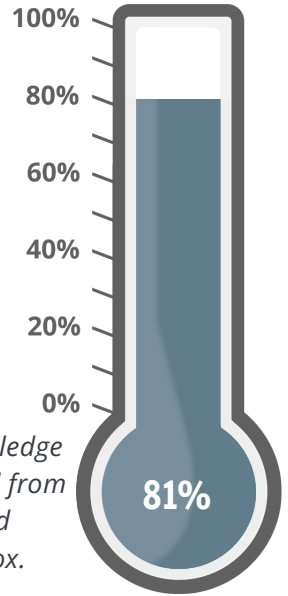
### WE ARE BUILDING A NEW ALLENDALE

Here's an update on our pledges for 2023.

We have received pledges from 57 families.

**\$243,034** of our  
**\$300,000** goal  
 has been pledged  
 as of Thu Dec 1.

*Make your pledge at  
[www.allendaleumc.org/pledge](http://www.allendaleumc.org/pledge)  
 or pick up a pledge card from  
 the table in the back and  
 drop it in the offering box.*



### ALLENDALE GARDEN:

This month, the gardens at Allendale produced 190 lbs of food, most of it being donated to folks who can't afford fresh food.



### COMMUNITY CIRCLE OF CAREGIVERS:

On Sunday, December 11 at 9 AM in the Wesley Room, you are invited to learn and discern if you want to be part of Allendale's pastoral care team known as the Community Circle of Caregivers (CCC).

## SECOND SUNDAY IN ADVENT

*God meets us in our fear*

*Let us know you are here by going to [www.allendaleumc.org/here](http://www.allendaleumc.org/here)*

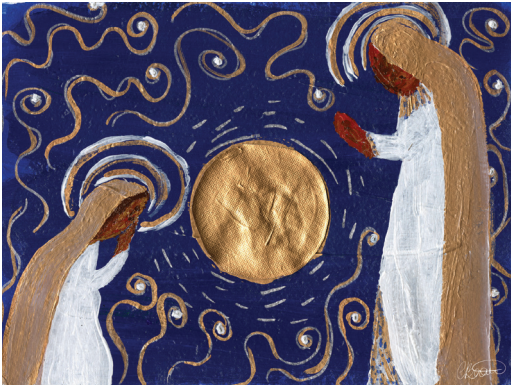
PRELUDE .....	Allendale Band
WELCOME .....	Rev. Andy Oliver
SONG .....	Allendale Band
<i>From Generation to Generation</i>  Burns	
CALL TO WORSHIP & AFFIRMATION OF FAITH .....	Lynn Hawkins
LIGHTING THE ADVENT CANDLES .....	Congregation
<i>The Candle of Peace</i>  Gillette	
PRAYER OF CONFESSION & WORDS OF FORGIVENESS .....	Lynn Hawkins
TIME WITH CHILDREN & PASSING OF THE PEACE.....	Rev. Andy Oliver
OFFERING .....	Congregation
<i>The Summons</i>  Bell	
<i>give online at <a href="http://www.allendaleumc.org/give">www.allendaleumc.org/give</a></i>	
PRAYERS OF THE PEOPLE .....	Theresa Frost
<i>The Lord's Prayer</i>  Miller	
POEM .....	Andrew Holland
<i>Love Comes Running</i>  by Rev. Sarah Speed  <a href="http://sanctifiedart.org">sanctifiedart.org</a>	
SONG .....	Allendale Band
<i>From Generation to Generation Reprise</i>  Burns	
PRAYER FOR ILLUMINATION & SCRIPTURE .....	Lynn Hawkins
<i>Isaiah 11:1-10, Luke 1:26-38</i>	
SERMON .....	Rev. Andy Oliver
SONG .....	Allendale Band
<i>Oh My Soul</i>  Hall, Herms	
CONNECTING WITH THE COMMUNITY .....	Theresa Frost
BENEDICTION .....	Lynn Hawkins
POSTLUDE .....	Allendale Band



by Hannah Garrity

### ISAIAH 11:1-10

The threat looms, yet the roots thrive and the sprout emerges from the stump. The prey and the predator are on equal terms; no longer is one superior to another.



by Carmelle Beaugelin

### LUKE 1:26-38

Perhaps the most remarkable annunciation in this passage is not the messenger's revelation to Mary, but Mary's 'yes' to the call.

*"From Generation to Generation"*  
advent theme, liturgy, and artwork  
© A Sanctified Art LLC | sanctifiedart.org

Rev. Andy Oliver, Pastor | [andy@allendaleumc.org](mailto:andy@allendaleumc.org)

Rev. David Franks, Minister of Pastoral Support | [david@allendaleumc.org](mailto:david@allendaleumc.org)

Tru Mizzell, Music Development | [tru@allendaleumc.org](mailto:tru@allendaleumc.org)

Theresa Frost, Children/Youth | [theresa@allendaleumc.org](mailto:theresa@allendaleumc.org)

Cameron Helwege, Creative Director | [cameron@allendaleumc.org](mailto:cameron@allendaleumc.org)

Beth Jones, Church Administrator | [beth@allendaleumc.org](mailto:beth@allendaleumc.org)

Aaron Bennett, Maintenance | [aaron@allendaleumc.org](mailto:aaron@allendaleumc.org)

Bill Lee | Organist

Maria Davidson | Nursery Coordinator

Madison Redington, Hannah Newton, Erin Giblin,

Courtney Ross | Nursery Attendants

Dr. Kate Pravera | Theologian in Residence

All in the Congregation | Ministers of the Gospel

## THIS WEEK

For a listing of virtual meetings, go to:  
[www.allendaleumc.org/online](http://www.allendaleumc.org/online).

### Sun Dec 4

10:30 AM Worship Service (Sanctuary)

4 PM "We Support Trans Youth" (City Hall)

5 PM AA Crystal Meth Anon (Tubman)

5:30 PM Youth Group (Wesley, Kitchen, Youth)

### Mon Dec 5

6:30 PM United Women in Faith (Wesley)

7:30 PM AA Common Solutions (Bill W.)

8 PM AA Go After Sobriety (Rustin & Tubman)

### Tue Dec 6

10 AM Women's Sharing & Praying (Zoom)

### Wed Dec 7

6 PM Scripture Class (Zoom)

6 PM Staff Parish Meeting (Zoom)

7 PM Christmas Choir Rehearsal (Sanctuary)

7 PM Trustees (Zoom)

8 PM AA Go After Sobriety (Rustin)

### Thu Dec 8

7 PM Gay Men's Chorus Rehearsal (Sanctuary)

7 PM Christmas Choir Rehearsal (Chapel)

7 PM 2nd Winds Practice (Community Center)

7 PM AA Home Group (Bill W.)

### Fri Dec 9

7 PM Christmas Caroling (100 Mirror Lake Dr)

7:30 PM AA Common Solutions (Bill W.)

8 PM AA Go After Your Sobriety (Rustin)

8 PM Gay Men's Chorus Concert (Sanctuary)

### Sat Dec 10

9 AM Tree Lot (Parking Lot)

9:30 AM AA Women's Reflection (Bill W.)

3 PM Christmas Choir Rehearsal (Sanctuary)

### Sun Dec 11

9 AM Community Circle of Caregivers (Wesley)

10:30 AM Worship Service (Sanctuary)

5 PM AA Crystal Meth Anon (Tubman)

5:30 PM Youth Group (Wesley, Kitchen, Youth)

Subscribe to the Allendale Calendar:  
[www.allendaleumc.org/calendar](http://www.allendaleumc.org/calendar).