

ALLENDALE

UNITED METHODIST CHURCH

MAY 22, 2022

3803 Haines Road North
St. Petersburg, FL 33703

(727) 527-6694
office@allendaleumc.org

www.allendaleumc.org

WELCOME

Allendale United Methodist Church is a Reconciling Congregation. We affirm the sacred worth of all people and strive to practice Christ's example of unconditional love without exclusion. All are welcome to participate fully in the life and ministries of this congregation. Whatever your race, ethnicity, economic situation, sexual orientation, gender identity or expression, background or belief, age or condition of ableness, whether single or partnered, you are God's beloved and are welcome here. God calls us to acts of love, grace, and advocacy to promote healing and reconciliation. We are building a new Allendale: a place without barriers, a sanctuary for all.

Office Hours: Mon - Thu, 9 AM to 3 PM

We are honored that you chose to worship with us today! To learn more about the life of the church, if you have a special need, or you wish to visit with the pastor, please contact Beth in the office at 727.527.6694, office@allendaleumc.org.

Gender Pronouns: Asking and correctly using someone's correct pronoun is one of the most basic ways to show your respect for their gender identity. When someone is referred to with the wrong pronoun, it can do harm.

Childcare/Nursery: Located in the courtyard, the first room to the right as you leave the sanctuary building. Children are welcomed and encouraged to stay in worship, even if they are noisy! The nursery is available beginning at 10 AM for children younger than kindergarten

Children's activity sheets and fidget bags are available in the narthex.

Changing table is available in the Nursery.

Unisex/family restrooms are accessible from the narthex, to the left as you exit the sanctuary.

The balcony is open for those wishing to have more social distancing.

Holy Communion is typically celebrated on the first Sunday of the month.

Masks are required while on campus at Allendale to protect the most vulnerable.

Zoom links for Allendale's virtual events can be found at www.allendaleumc.org/online

UPCOMING EVENTS

- Sun Jun 12 New Member Sunday (Sanctuary) 10:30 AM
Sign-up at allendaleumc.org/join
- Jun 19-24 Music & Worship Arts Week at Lake Junaluska, NC
Learn more at www.musicartsweek.org
- Sat Jun 25 St Pete. Pride Parade
- Jul 11-16 Summer Camp at Warren Willis Camp (Fruitland Park)
Learn more at www.wwumccc.org/programs/classic-camps
- Aug 1-5 Wild Wonder - Vacation Bible School
Learn more at www.allendaleumc.org/vbs

WORSHIP NOTES

LITURGIST:

JUSTIN MILLER (he/him/his) and his wife, Trista, have lived in and around St. Pete for over ten years. They are attorneys and graduates of Stetson University College of Law. Trista and Justin can be found gardening, fixing up their house, or building k'nex and Lego construction vehicles with their son, Harris.

TODAY'S WORSHIP BAND:

drums - Izzy StAmand
bass - Matthew Blaine
guitar - Sam Wyness
piano/vocals - Judy Haines-Hricik
vocals - Shannon Wright
*Contact tru@allendaleumc.org
to join our band or choir*

WANT TO JOIN ALLENDALE?:

The next opportunity:
Sun Jun 12 at 10:30 AM
Sign-up at: www.allendaleumc.org/join

ANNOUNCEMENTS

PRIDE 2022 T-SHIRTS: We are excited to announce our 2022 PRIDE T-shirts. We have sizes ranging from XS-4XL. T-shirts cost \$25 each or you can buy a reduced-price shirt for \$10.

*See the design and order your shirt here:
www.allendaleumc.org/shirt*

POETRY SHOWCASE: Join Hannah Newton & Rose Cervantes at The Factory on May 27, 2022 for The Fig & The Rose: Dreaming in Moonlight Poetry Showcase! This poetic event illuminates our journey as we grapple with the impact and the divinity of the moon, all it symbolizes and casts on our shared human existence. The show begins at 7 PM. Light desserts will be provided. The event is free to the community, but donations are greatly appreciated, as we are working poets. We hope you'll join us on this galactic expedition.

BOOKS AND BREAKFAST: Dream Defenders has a monthly free Books and Breakfast event in Child's park. The next event is on May 28 at 11 AM. The topic will be bullying. They are also requesting book donations, particularly books written by black authors.

Suggested books: aalbc.com

STEWARDSHIP

PRAYERS

Ruth Spangler: recovering from a fall
Greta Williamson: Gene's heart recovery (brother)
Greta Williamson: Cindy's chemotherapy (friend)
Matt Blaine: kidney stone treatments
Tom Simpson: recovering from fractured femur
MaryEllen Simpson: loss of Kitty McQuillen (sister)
Donna Baxla: lung cancer treatments
Lorin Baxla: loss of Rita Shonkwiler (sister)
Marla Radigan: knee replacement recovery
Keith Glasscock: Mary's health concerns (mother)
Kate Pravera: sister's breast cancer recurrence
Betsy Drouin: loss of Peter Drouin (father)
Kenya Edghill: father's cancer treatments

BIRTHDAYS

Raegan Miller	May 22
Jeff Ishman	May 24
Mary Sinclair	May 26
Chris Marks	May 28
Evan Oliver	May 29
Ginger Holton	Jun 6
Cuth Hutton	Jun 10
Greg Brecht	Jun 11

Birthdays missing? Please contact the office

PRESENCE

Previous Sunday: 62 in-person, 174 online
Livestream: www.allendaleumc.org/online

GIFTS

Give online: www.allendaleumc.org/give
Text-to-give: Text amount to 727-312-0808
Amazon Smile: Allendale United Methodist

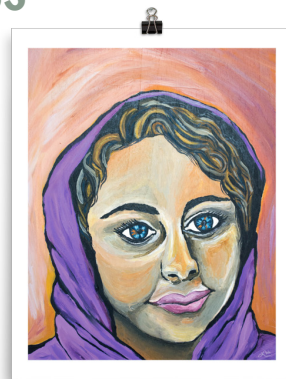
SETTING UP AUTOMATIC ONLINE GIVING:

Signing up is easy. Our goal for 2022 is to have every pledged giver signed up. Thank you so much for your investment in our collective work of liberation. Contact Beth to set up online giving or go to our website www.allendaleumc.org/give.

Give Online



WITNESS



FROM THE ARTIST:

As the reach of the apostles expands, Paul, Silas, Timothy, and their companions make their way through Asia Minor to Europe, stopping briefly in Philippi, part of modern-day Greece. Since there may not have been an established synagogue in Philippi, on the Sabbath they find a prayer-house on the river, a space filled not with men and high priests, but women. They join them and as Paul speaks, one woman in particular—Lydia of Thyatira, a Gentile devoted to Jewish worship, a dealer of purple cloth—listens intently, her heart expanding with every word.

Despite her outsider status (Thyatira was part of Asia Minor) and how women are typically portrayed in scripture, Lydia is a woman of power, influence, and dignity. Purple dye was a luxury item for the elite, so we are to assume that Lydia is an established businesswoman. She is also, surprisingly, the leader of her household. After being stirred by Paul's message, she and "her household" are baptized.

As the only Philippian convert named in Acts, Lydia was quite possibly the leader and patron of the Philippian church. She used her wealth to establish the community, she risked her reputation as a businesswoman to house foreigners released from prison, she sanctified her conversion with acts of radical hospitality. In this image, I wanted her eyes to be the focal point. I hope they draw you in, radiating her warmth.

—Lisle Gwynn Garrity

ORDER OF WORSHIP

Let us know you are here by going to www.allendaleumc.org/here

PRELUDE Allendale Band
We Are One (By God's Love) | Grant|

WELCOME Rev. Andy Oliver
Allendale United Methodist Church is a Reconciling Congregation. We affirm the sacred worth of all people and strive to practice Christ's example of unconditional love without exclusion. All are welcome to participate fully in the life and ministries of this congregation. Whatever your race, ethnicity, economic situation, sexual orientation, gender identity or expression, background or belief, age or condition of ableness, whether single or partnered, you are God's beloved and are welcome here. God calls us to acts of love, grace, and advocacy to promote healing and reconciliation. We are building a new Allendale: a place without barriers, a sanctuary for all.

SONG Allendale Band
God of the Women | Gillette, Slane|

CALL TO WORSHIP, PRAYER, CREED Justin Miller
Affirmation From Romans Chapter Eight

SONG Allendale Band
Hymn Of The Holy Spirit |Barrett|

TIME WITH CHILDREN Rev. Andy Oliver

OFFERING Congregation
give online at www.allendaleumc.org/give

OFFERTORY Allendale Band
Draw the Circle Wide |Miller|

SONG Allendale Band
We Sing Of Loyal Lydia |Downing|

SCRIPTURE Justin Miller
Acts 16:9-15

SERMON Rev. Andy Oliver

SONG Allendale Band
Imagine |Lennon|

CONNECTING WITH THE COMMUNITY Theresa Frost

BENEDICTION Justin Miller

POSTLUDE Allendale Band
We Are One (By God's Love) |Grant|



ACTS 16:9-15

Blessed be our God who insists upon abundance and care for Her people. She meets our needs even in Her Sabbath leisure, as do Her trees bearing twelve fruit varieties twelve months of the year symbolizing total provision. Where our systems do not offer our siblings an equal opportunity to pursue pools of healing, we may see to the lifting of the lowly knowing that our Mother's trees hold healing power in each vein of every leaf. We were made for fullness that, rather than requiring disability be "fixed," demands that no one is left behind in the pursuit of liberation. So, the people praise, and the nations sing for joy in awe of the Goodness of our Creator.

*Photo from Unsplash
Liturgy that Matters by Enfleshed*

Rev. Andy Oliver, Pastor | andy@allendaleumc.org
Tru Mizzell, Music Development | tru@allendaleumc.org
Theresa Frost, Children/Youth | theresa@allendaleumc.org
Cameron Helwege, Creative Director | cameron@allendaleumc.org
Beth Jones, Church Administrator | beth@allendaleumc.org
Aaron Bennett, Maintenance | aaron@allendaleumc.org
Maria Davidson | Nursery Coordinator
Bill Lee | Organist
Kaitlyn Grainger, Madison Redington, &
Adrienne Mitenius | Nursery Attendants

All in the Congregation | Ministers of the Gospel
Dr. Kate Pravera | Theologian in Residence
Rev. David Franks | Clergy in Residence

THIS WEEK

*For a listing of virtual meetings, go to:
www.allendaleumc.org/online.*

Sun, May 22

10:30 AM Worship Service (Sanctuary)
5 PM AA Crystal Meth Anon (Tubman)
5:30 PM Youth (Wesley, Kitchen & Youth Room)

Mon, May 23

7:30 PM AA Common Solutions (Bill W.)
8 PM AA Go After Sobriety (Rustin & Tubman)

Tue, May 24

10 AM Women's Sharing & Praying (Zoom)
7 PM Depression & BiPolar Support (CC)

Wed, May 25

6 PM Scripture Class (Zoom)
7 PM Pride Choir Rehearsal (Sanctuary)
7 PM Women's Bible Study (Zoom)
8 PM AA Go After Sobriety (Rustin)

Thu, May 26

6 PM True Justice Documentary (Sanctuary)
7 PM AA Home Group (Bill W.)
8 PM AA Go After Your Sobriety (Rustin)

Fri, May 27

6:30 PM Tru' Time Orchestra (Sanctuary)
7:30 PM AA Common Solutions (Bill W.)
8 PM AA Go After Your Sobriety (Rustin)

Sat, May 28

9:30 AM AA Women's Reflection (Bill W.)
1 PM Tru' Time Orchestra (Sanctuary)

Sun, May 29

10:30 AM Worship Service (Sanctuary)
5 PM AA Crystal Meth Anon (Tubman)
5:30 PM Youth (Wesley, Kitchen & Youth Room)