



# ALLENDALE

UNITED METHODIST CHURCH

MARCH 27, 2022

3803 Haines Road North  
St. Petersburg, FL 33703

(727) 527-6694  
office@allendaleumc.org

www.allendaleumc.org

## WELCOME

Allendale United Methodist Church is a Reconciling Congregation. We affirm the sacred worth of all people and strive to practice Christ's example of unconditional love without exclusion. All are welcome to participate fully in the life and ministries of this congregation. Whatever your race, ethnicity, economic situation, sexual orientation, gender identity or expression, background or belief, age or condition of ableness, whether single or partnered, you are God's beloved and are welcome here. God calls us to acts of love, grace, and advocacy to promote healing and reconciliation. We are building a new Allendale: a place without barriers, a sanctuary for all.

### **Office Hours: Mon - Thu, 9 AM to 3 PM**

We are honored that you chose to worship with us today! To learn more about the life of the church, if you have a special need, or you wish to visit with the pastor, please contact Beth in the office at 727.527.6694, office@allendaleumc.org.

**Gender Pronouns:** Asking and correctly using someone's correct pronoun is one of the most basic ways to show your respect for their gender identity. When someone is referred to with the wrong pronoun, it can do harm.

**Childcare/Nursery:** Located in the courtyard, the first room to the right as you leave the sanctuary building. Children are welcomed and encouraged to stay in worship, even if they are noisy! The nursery is available beginning at 10 AM for children younger than kindergarten

**Children's activity sheets** and fidget bags are available in the narthex.

**Changing table** is available in the Nursery.

**Unisex/family restrooms** are accessible from the narthex, to the left as you exit the sanctuary.

**The balcony** is open for those wishing to have more social distancing.

**Holy Communion** is typically celebrated on the first Sunday of the month.

**Masks** are required while on campus at Allendale to protect the most vulnerable.

**Zoom** links for Allendale's virtual events can be found at [www.allendaleumc.org/online](http://www.allendaleumc.org/online)

# UPCOMING EVENTS

- Mon Mar 28 FAST Nehemiah Action (St Michael the Archangel Catholic Church) 7 PM
- Sat Apr 9 Easter Cleanup Work Party 9 AM
- Sun Apr 10 New Member Sunday (Sanctuary) 10:30 AM  
*Sign-up at [allendaleumc.org/join](http://allendaleumc.org/join)*
- Sat Apr 16 Easter Egg Hunt 10 AM  
*RSVP at [allendaleumc.org/egghunt](http://allendaleumc.org/egghunt)*
- Sun Apr 17 Easter Sunrise Service (Crescent Lake Park) 7 AM
- May 20-22 United Women in Faith (UMW) National Assembly (Orlando)  
*Register at [www.assembly2022.org](http://www.assembly2022.org)*
- Jun 19-24 Music & Worship Arts Week at Lake Junaluska, NC

## WORSHIP NOTES

### LITURGY WRITTEN BY:

**Hannah Newton** (she/her)

is from Hawesville, Kentucky and moved to St. Pete in January 2020. Hannah works with children at a local preschool. In her free time, Hannah is a creative who enjoys painting, writing, and photography.

**Raegan Miller** (she/her)

was born in Knoxville, TN and moved to Florida when she was 3 years old. She spent most of her childhood in Orlando, FL with her mother and younger brother. She received her BS in Accounting from Florida State University in 1997, and Master of Accounting from FSU in 1998. Raegan started practicing as a Certified Public Accountant in Atlanta, GA, and lived in Atlanta for five years before moving back to Florida in 2003. She met her husband, Todd, they were married in 2007, and have two children, Lane (12) and Raleigh (10). They also have one yorkshire terrier, Ellie.

### TODAY'S WORSHIP BAND:

Matthew Blaine - bass

Mallory Edghill - vocals

Jazmine Mateus - guitar/vocals

Tru Mizzell - piano

Michelle Taylor - vocals

Joshua Throop - drums

Contact [tru@allendaleumc.org](mailto:tru@allendaleumc.org) to join.

## ANNOUNCEMENTS

### FAST NEHEMIAH ACTION:

Each year, Faith & Action for Strength Together (FAST) gathers a large number of people at the Nehemiah Action assembly to show our power and negotiate solutions with our public officials. This year, the Nehemiah Action will be held outdoors at St. Michael the Archangel Catholic Church in Clearwater on Mon Mar 28 at 7 PM. A charter bus will be available at Allendale if you would like to park here and ride to the Action. The bus will leave from Allendale at 6 PM. Reach out to Theresa Frost at [theresa@allendaleumc.org](mailto:theresa@allendaleumc.org) with any Questions.

### HOLY WEEK WORSHIP OPPORTUNITIES:

Thu Apr 14 Maundy Thursday 12 PM

Fri Apr 15 Good Friday 12 PM

Sat Apr 16 Easter Egg Hunt 10 AM

Sun Apr 17 Sunrise (Crescent Lake) 7 AM

Sun Apr 17 Easter w/Choir 10:30 AM

**EASTER CLEANUP WORK PARTY:** Keeping our church building clean is an important part of creating a safe and welcoming environment for all here at Allendale UMC. Many hands makes for light work, so you are invited to participate in an Easter Cleanup Work Party on Sat Apr 9 from 9 AM - 12 PM. Sponsored by the Trustees.

# STEWARDSHIP

## PRAYERS

**Ruth Spangler:** recovering from a fall  
**David Franks:** surgery recovery/healing  
**Donna Baxla:** lung cancer treatments  
**Anthony Lenzo:** Aunt Judy (IN) recovery

## BIRTHDAYS

Sandi Holtzclaw	Mar 27
Hillary Nix	Mar 30
Todd Miller	Apr 1
Tru Mizzell	Apr 1
Lorin Baxla	Apr 3
Lashley Marks	Apr 7
Jalen Garza	Apr 9
Diane Gibson	Apr 12
Stephanie Lindeman	Apr 14
Ellen Mowbray	Apr 15

*Birthday missing? Please contact the office.*

## PRESENCE

Previous Sunday: 58 in-person  
Total Livestream: 165  
*Livestream: [www.allendaleumc.org/online](http://www.allendaleumc.org/online)*

## WANT TO JOIN ALLENDALE?:

The next opportunity:  
**Sun Apr 10 at 10:30 AM**  
Sign-up at: [www.allendaleumc.org/join](http://www.allendaleumc.org/join)

## GIFTS

**Give online:** [www.allendaleumc.org/give](http://www.allendaleumc.org/give)  
**Text-to-give:** Text amount to 727-312-0808  
**Amazon Smile:** Allendale United Methodist

## SETTING UP AUTOMATIC ONLINE GIVING:

Signing up is easy. Our goal for 2022 is to have every pledged giver signed up. Thank you so much for your investment in our collective work of liberation. Contact Beth to set up online giving or go to our website [www.allendaleumc.org/give](http://www.allendaleumc.org/give).

*Give Online*



## WITNESS



### **SLEEPER, AWAKE**

*40 days of companionship for the  
deconstruction process*

**By Suzanne Dewitt Hall**

We at Allendale have chosen the Lenten season this year to deconstruct our faith. We are using as a foundation for this practice the devotional written by Suzanne DeWitt Hall called "Sleeper, Awake 40 days of companionship for the deconstruction process" The Path of Unlearning: Book One.

DECONSTRUCTION can mean many things. The Miriam Webster dictionary definition that DeWitt Hall references is:

"The analytic examination of something (such as a theory) often in order to reveal its inadequacy."

DeWitt Hall additionally writes that "Christian deconstruction is a process of questioning what was previously unquestioned and grappling with the implications of what's revealed as elements are stripped away."

In academia, deconstruction is a specific term referring to a way of analyzing texts, looking at relationships between words, and the inherent instability of their meanings.

Deconstruction broadly means breaking down, taking apart, examining, questioning, deciding which parts are broken or no longer serve us, and then keeping what's valuable and true. It can be painful and hard, but also rewarding and transformational, often leaving oneself with a joyful sense of renewed purpose.

# ORDER OF WORSHIP

*Let us know you are here by going to [www.allendaleumc.org/here](http://www.allendaleumc.org/here)*

PRELUDE ..... Bill Lee

*Prelude on Hyfrydol* |Young|

WELCOME ..... Rev. Andy Oliver

*Allendale United Methodist Church is a Reconciling Congregation. We affirm the sacred worth of all people and strive to practice Christ's example of unconditional love without exclusion. All are welcome to participate fully in the life and ministries of this congregation. Whatever your race, ethnicity, economic situation, sexual orientation, gender identity or expression, background or belief, age or condition of ableness, whether single or partnered, you are God's beloved and are welcome here. God calls us to acts of love, grace, and advocacy to promote healing and reconciliation. We are building a new Allendale: a place without barriers, a sanctuary for all.*

SONG ..... Allendale Band

*Be Thou My Vision* |Byrne, Hull, Slane|

CALL TO WORSHIP ..... Hannah Newton

SONG ..... Allendale Band

*Wake Up* |Leonard, Chaffer, Jordan|

READING - LITURGY DEVOTIONAL "SLEEPER, AWAKE" ..... Hannah Newton

OFFERING ..... Congregation

*give online at [www.allendaleumc.org/give](http://www.allendaleumc.org/give)*

OFFERTORY ..... Allendale Band

*The More I Seek You* |Neese, Jobe|

PASTORAL PRAYER ..... Hannah Newton

SONG ..... Allendale Band

*Simple Gospel* |Reagan|

WORDS OF INSPIRATION ..... Hannah Newton

SCRIPTURE ..... Hannah Newton

*Matthew 7:8-12*

SERMON ..... Raegan Miller

SONG ..... Allendale Band

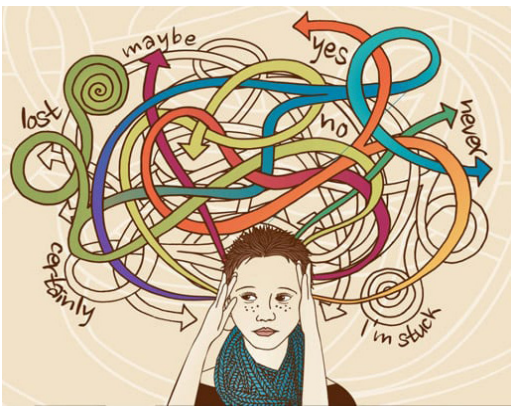
*How True is Your Love* |Grace & Keogh|

CONNECTING WITH THE COMMUNITY ..... Theresa Frost

BENEDICTION ..... Hannah Newton

POSTLUDE ..... Bill Lee

*Benedictus on Silician Mariner* |Young|



### **MATTHEW 7:8-12**

*Suzanne Dewitt Hall writes, "There are a thousand paths which lead to the door of questioning. You aren't alone on the journey.*

*A movement of unlearning is sweeping the world, resulting in casualties and new creations, heartbreak and joy, damage and freedom." Join us as we dive feet first into the depths of faith that are murky. Let us breathe in vulnerability with ourselves and all that lies beneath the surface.*

Rev. Andy Oliver, Pastor | [andy@allendaleumc.org](mailto:andy@allendaleumc.org)

Tru Mizzell, Music Development | [tru@allendaleumc.org](mailto:tru@allendaleumc.org)

Theresa Frost, Children/Youth | [theresa@allendaleumc.org](mailto:theresa@allendaleumc.org)

Cameron Helwege, Creative Director | [cameron@allendaleumc.org](mailto:cameron@allendaleumc.org)

Beth Jones, Church Administrator | [beth@allendaleumc.org](mailto:beth@allendaleumc.org)

Aaron Bennett, Maintenance | [aaron@allendaleumc.org](mailto:aaron@allendaleumc.org)

Maria Davidson | Nursery Coordinator

Bill Lee | Organist

Kaitlyn Grainger, Madison Redington, &

Adrienne Mitenius | Nursery Attendants

All in the Congregation | Ministers of the Gospel

Dr. Kate Pravera | Theologian in Residence

Rev. David Franks | Clergy in Residence

## **THIS WEEK**

For a listing of virtual meetings, go to:  
[www.allendaleumc.org/online](http://www.allendaleumc.org/online).

### **Sun, Mar 27**

10:30 AM Worship Service (Sanctuary)

5 PM AA Crystal Meth Anon (Tubman)

5:30 PM Youth (Wesley, Kitchen & Youth Room)

### **Mon, Mar 28**

5:45 PM Bus to FAST Nehemiah Action (parking lot)

7 PM FAST Nehemiah Action (offsite)

7 PM St. Pete Band (Community Center)

7:30 PM AA Common Solutions (Bill W.)

8 PM AA Go After Sobriety (Rustin & Tubman)

### **Tue, Mar 29**

10 AM Women's Sharing & Praying (Zoom)

6 PM Staff Parish Meeting (Zoom)

7 PM Trustees Meeting (Zoom)

7 PM Depression & BiPolar Support (Wesley)

### **Wed, Mar 30**

6 PM Scripture Class (Zoom)

7 PM Easter Choir Rehearsal (Sanctuary)

7 PM Women's Bible Study (Zoom)

8 PM AA Go After Sobriety (Rustin)

### **Thu, Mar 31**

1 PM Recorder Group (Community Center)

6 PM Finance Team Meeting (Zoom)

7 PM Church Council Meeting (Zoom)

7 PM AA Home Group (Bill W.)

8 PM AA Go After Your Sobriety (Rustin)

### **Fri, Apr 1**

7:30 PM AA Common Solutions (Bill W.)

8 PM AA Go After Your Sobriety (Rustin)

### **Sat, Apr 2**

9:30 AM AA Women's Reflection (Bill W.)

12 PM Sew Much Hope (Community Center)

1 PM Easter Choir Rehearsal (Sanctuary)

### **Sun, Apr 3**

10:30 AM Worship Service (Sanctuary)

5 PM AA Crystal Meth Anon (Tubman)

5:30 PM Youth (Wesley, Kitchen & Youth Room)